



**2024
WORKBOOT
CATALOGUE**

 **KingGee**





ABOUT KINGGEE	3
HISTORY OF INNOVATION	4
BUILDING A BETTER FUTURE	6
RANGE PLAN	10
PRODUCT FEATURES	12
PRODUCTS	19
SIZE GUIDES	38
COMPLIANCE GUIDES	39
FOOTWEAR FEATURES	40
CARE GUIDES	41



CORDURA
FABRIC

King Gee



KINGGEE STARTS HERE

We're passionate about making workwear that helps you perform at your best.

KingGee has been part of the Australian story since 1926 when Robert Adcock founded the company and set up operations in Sydney. The original KingGee overall was born out of humble beginnings and was the first in a long line of work garments known for their quality and careful craftsmanship.

Over the years, KingGee has evolved with the needs of changing work environments. Today, comfort, design and our relentless pursuit of quality and performance remain at our core.

Leaders in the industrial workwear industry, our premium products are engineered with technology and sustainability at the forefront, ensuring durability and maximum performance.

KingGee is Australia's specialised workwear brand for apparel and footwear – providing exceptional customer support, true performance in harsh Australian conditions & leading quality.

If it says KingGee on it, you can trust it to deliver the performance you need.

A HISTORY OF INNOVATION

1938-45

KingGee created clothing for the Department of Supply to aid Australia during World War II. This led to the creation of the first KingGee Overall, which sparked a series of high-quality, well-crafted work garments.



1970-1980

The phrase "If They Were Any Tougher They'd Rust" became closely associated with KingGee. Our top-of-the-line products are designed with science to provide comfort, durability, and functionality, allowing you to perform at your best in any situation. The Originals Range has become a staple in the Australian market.



1926

Established in Sydney by Mr Robert Adcock.



1946-49

As time passed, KingGee adapted to the evolving needs of the workplace. They introduced the slogan "Work With Ease in KingGee" and expanded their product line to include men's casual shorts and dust coats.



1990-99

KingGee continued to grow and evolve, and one of the exciting developments was the launch of the "For A Nation At Work" campaign. This campaign led to the expansion of the "Permanent Press" range, which included new and innovative products that were added to their catalog. Nowadays, this range is referred to as "Smart Casuals."

2000-08

The launch of “Workwear You Can Trust” was a big moment for KingGee, and it brought some exciting new products to the market. The New G’s and Worn G’s were designed to be reliable, durable, and functional, so you can feel confident and comfortable on the job.



2018

With the launch of “Comfort is King,” KingGee re-emerged as a leading brand in the industrial workwear industry. This campaign was a commitment to developing technologically advanced workwear, specifically engineered to keep workers comfortable in the harsh Australian environment.

2008-15

KingGee was a true trailblazer in the world of industrial workwear. They weren't afraid to think outside the box and push the boundaries of garment development to new heights.

One of their greatest achievements was being the first to introduce Workcool technology, which made a huge impact in the industry with its breathable and lightweight vented workwear.

They continued to innovate with Workcool 2, Tradies Work Denim, and a variety of technical workboots. KingGee was always on the cutting edge when it came to workwear, and their innovations were always designed with the comfort and performance of the worker in mind.

2023 AND BEYOND

KingGee is a well-known and trusted name in the world of workwear. We create apparel and footwear that's not only built to last and perform, but also designed to make you feel comfortable and confident on the job.

We've come a long way since our first pair of overalls, but one thing that's never changed is our commitment to innovation and quality.

We're passionate about what we do, and it shows in every piece of apparel and footwear we make. And we're not just focused on making great workwear, we're also dedicated to doing it in a way that's good for the environment.

We have various initiatives and programs in place to reduce our impact on the earth and promote sustainable practices. Exciting new developments are always on the horizon, so you can count on us to keep you working and looking your best!

BUILDING A BETTER FUTURE

KINGGEE'S PATH TO SUSTAINABLE AND ETHICAL SOURCING

KingGee, as part of Workwear Group, operates within the Wesfarmers framework that ensures we follow strict procedures and product safety requirements and comply with firm standards on ethical production and human rights.

We take full accountability and are responsible for the products we create. Our key objectives align with our four pillars — people, sourcing, community and environment — which are aligned with the United Nations' Sustainable Development Goals (SDG).

Our mission is clear, to have a positive influence on our community, the products we create and the planet we all share.

ETHICAL SOURCING & HUMAN RIGHTS

We strive to source products in a responsible manner while working with suppliers to improve their social and environmental practices.

KingGee opposes the use of Modern Slavery practices in all forms and is committed to an ongoing journey of reducing and eradicating the risk of modern slavery in its supply chains and throughout its business operations, both domestically and abroad. We endeavour to source products in a responsible manner while working with suppliers to improve their Ethical & Modern slavery practices.

Being a subsidiary of Wesfarmers, KingGee as a Workwear Group brand has reported publicly on our ongoing journey and performance against abolishing Modern Slavery within our supply chain since 2015. Progress on how we assess, remediate and mitigate Ethical and Modern Slavery risk throughout our supply base is made publicly available through Wesfarmers 2022 Modern Slavery Statement.

We utilise the Sedex platform to streamline ethical sourcing and human rights compliance, monitoring and social compliance audits. To align with global best practice, we use the SMETA 6.1 audit methodology, developed by Sedex. As such, we hold our suppliers accountable in a range of areas including safety practices, legal compliance, labour and human rights, modern slavery, anti-bribery and environmental impact. Our Local Australian Manufacturers are compliant with our ECA Accreditation.

We are committed to collaborating with our people, suppliers and the wider industry, improving working conditions for people employed along our supply chain and strengthen relationships with suppliers. We partner with the Bangladesh Accord (RMG Sustainability Council [RSC]), Ethical Clothing Australia (ECA), Baptist World Aid, Better Cotton and Sedex, and we are constantly looking for new partnerships to ensure we are delivering world-class sustainable objectives. By partnering with industry leading organisations, we guarantee that we are always striving for world's best practice in this ever-growing space.

Our company mission is to be the leading workwear provider and make every wearer feel proud, protected and positive at work, rest or play.

KingGee, as part of Workwear Group, upholds strict standards regarding product quality and safety. Workwear Group quality management system is accredited to the ISO 9001:2015 standard. This system covers every aspect of the production process, from design to finished product. We seek to provide the highest quality products for our customers, and our policies and programs ensure we can deliver on this promise. We conduct strict fabric and product testing and inspection to maintain product performance, safety, and quality during and in the pre- and post-production stages.



SCAN FOR MODERN SLAVERY STATEMENT



SCAN FOR OUR APPROACH TO HUMAN RIGHTS



As a member of APCO, Workwear Group is committed to the 2025 National Packaging Targets. KingGee is a trusted brand of Workwear Group and is focused on reducing on-product packaging and increasing recycled content in packaging.

Packaging reduction initiatives that KingGee is working on include:

- Further reducing the number of swing tickets on KingGee products;
- Replacing plastic tags with JUTE twine for KingGee swing tags;
- Reducing excess plastic packaging from KingGee footwear range and providing one swing tag only;
- Reducing the number of garment polybags by introducing a single carton liner for high volume KingGee products.*
- A partnership with Reground to collect and recycle coloured soft plastic. Reground creates a community around waste resources and our current waste disposal structure to minimise the number of coffee grounds, chaff and soft plastic ending up in landfill.
- Rebranding our new warehouse cartons to ensure the end user knows how to dispose of the packaging correctly.
- Ensuring all footwear boxes are made from fully recycled cardboard and advising customers that branded cardboard cartons are Forest Stewardship Council (FSC®) certified and should be recycled.

*Removing polybags is not feasible in some instances, as it might lead to damage, mould or dirt that makes the garment unfit for sale. In such cases, the environmental impact of using a polybag to protect the garment is perceived as lower than having to discard the garment in question. Workwear Group strives to find solutions to reduce or eliminate plastic bags wherever possible.



RESPONSIBLE FABRICS & RESPONSIBLE SOURCING



Diverting waste from landfill, by introducing recycled materials.

REPREVE® is a brand of recycled materials made by Unifi, Inc, a global textile solutions provider and one of the world's leading innovators in synthetic and recycled performance fibers. Unifi believes true innovation starts in the fiber, and REPREVE® is one of Unifi's proudest creations—made today for the good of tomorrow.

For consumers who want to care for the environment, now and into the future, REPREVE® is the leading brand that inspires to be a catalyst for change through recycling. When they buy products made with REPREVE®, they know they are part of a movement to protect the land, oceans, wildlife, air and natural resources they love, for the next generation.

REPREVE® is performance fiber made from 100% recycled materials, including recycled plastic bottles. REPREVE® is creating an amazing loop that recovers waste to make our land, oceans, air and natural resources sustainable for the next generation.



We're on a mission – a mission to improve cotton farming globally.

KingGee, as part of Workwear Group, has committed to sourcing 100 per cent of its cotton from preferred or 'more sustainable' sources by 2025. 'More sustainable' cotton includes Better Cotton, Australian Cotton, organic cotton and recycled cotton. KingGee, as part of Workwear Group, has taken a step forward in our sustainability journey by partnering with Better Cotton to improve cotton farming practices globally.

Better Cotton trains farmers according to best-farming practices covering efficient water use, soil health care, harmful pesticides and fertiliser reduction, and respect for worker rights and wellbeing. As of FY22, 65 per cent of our cotton is sourced as Better Cotton, ahead of our 2025 target. Better Cotton is sourced via a system of 'mass balance'. While the cotton fibre itself is not physically traceable to end products, Better Cotton farmers benefit from the demand for Better Cotton in equivalent volumes to those we 'source.'

Better Cotton brings together farmers, ginners, manufacturers, retailers, brands, civil society and grassroots organisations in a unique global community committed to developing Better Cotton as a sustainable mainstream commodity.



FOOTWEAR FOR THE FUTURE

A sustainable future, one step at a time.

At KingGee, we know how important it is that we all do our part. We are working to integrate more sustainable development and design in all facets of the product. KingGee is very passionate about this, and strives to be industry leaders in finding new ways to incorporate both recycled materials and improved processes.

Improved commitment to our sustainability journey include increasing recycled materials in our products – our latest launch, Quantum, has been engineered with recycled elements, resulting in a product made using 33% recycled plastics and textiles. This is achieved using NatureTex Linings and upper material, which is made from recycled plastic bottles.

Other key sustainable elements include:

- Recycled ETPU popcorn footbed
- KingGee TPU contains recycled material
- Initiatives in packaging reduction and movement to more sustainable options
- Footwear boxes contain recycled cardboard
- Reduction in the use of swing tags
- Reduction in plastic bags (secondary lace packaging).

MEN'S FOOTWEAR



Quantum
K27115
PG 153



Quantum
K27120
PG 153



Quantum
K27145
PG 153



Terra Firma
K27951
PG 154



Terra Firma
K27952
PG 154



Phoenix 6C EH MET
K27872
PG 150



Tradie 130mm
K27100
PG 156



Tradie 130mm
K27150
PG 156



Tradie 6CZ EH 150mm
K27105
PG 157



Tradie 6CZ EH 150mm
K27155
PG 157



Tradie PR 130mm
K27125
PG 157



Tradie Boa 130mm
K27170
PG 157



Tradie Gusset
K25200
PG 159



Tradie Gusset
K25250
PG 159



Wills Gusset
K25552
PG 159



Flinders Gusset
K25180
PG 158



Flinders Gusset
K25500
PG 158



Grip 3000
K26540
PG 161



Superlite
K22245
PG 161



Hydroguard Safety Gumboots
K29006
PG 161



Sludge Non Safety Gumboots
K29007
PG 161

WOMEN'S FOOTWEAR



Women's Tradie
K27380

PG 162



Women's Tradie
K27360

PG 162



Women's Tradie Gusset
K27390

PG 163



Women's Tradie 5
K26491

PG 162



Women's Tradie 5
K26490

PG 162



Women's Superlite
K22300

PG 163



Women's Superlite
K22340

PG 163



KINGGEE FOOTWEAR FEATURES



MEMORY FOAM FOOTBED

Sensitive to pressure and moulds perfectly around the contours of your foot. The PU bottom layer provides permanent cushioning and shock absorption.



ARZ+™ PAD TECHNOLOGY

Anatomical Rebound Zone (ARZ+) with an expandable polymer that provides excellent cushioning and rebound. ARZ+ heel protection difference is apparent at heel strike the soft contouring material dissipates force upon impact.



FULL GRAIN LEATHER

KingGee boots are made using the finest quality leathers that mould to the shape of your feet allowing your feet to “breathe”.



30 DAY COMFORT GUARANTEE

Our workboots have been engineered to provide maximum comfort. After careful study of the Australian foot anatomy we have designed KingGee boots with a wider last, sole & toe cap. We are so confident you will love these boots that they come with a 30 day comfort guarantee.



COMPOSITE TOE CAP

Composite safety toe caps provide the same level of protection as that afforded by steel toe caps tested under AS/NZS 2210.3:2009 (200 Joules) or AS 2210.3:2019 standards, with the added benefit of being non-conductive and are up to 30% lighter than a steel toe cap.



HAND MADE

This shoe is made by hand using quality materials and time-honoured traditional shoe making skills.



ACHILLES FLEX

Accordion-style flex point in the Achilles area allows the boot to flex. It's unique design allows the foot to flex forward when crouching and backward when changing gears in a car/truck preventing any pain and restriction in movement from the Achilles tendon.



COMPRESSION MOLDED EVA (CME)

Provides energy rebound with every step. Essential for those who cover a high amount of kilometres on hard surfaces, acting as a shock absorber while still being lightweight.



LIGHTWEIGHT

KingGee footwear incorporate safety toe caps in a contemporary yet durable design which feels lightweight on the wearer's foot.



AIRPORT FRIENDLY

Airport friendly boots feature non-metallic components. Plastic shanks are used in manufacture together with the use of a composite safety cap ensure KingGee footwear meets AS/NZS 2210.3:2009 or AS 2210.3:2019 safety standards.



DUAL DENSITY PU/TPU OUTSOLE

Polyurethane (PU) provides an excellent balance of shock absorption (cushioning) and energy return (rebound). Thermoplastic Polyurethane (TPU) has many useful properties including elasticity and resistance to most oil, grease and abrasion, as well as 130° Celsius heat resistance.



MET GUARD

Poron™ XRD™ Extreme Impact Protection material is a breakthrough technology. Extreme impact protection from a moulded pad stretching from the tongue to the steel cap. Contoured, breathable and flexible allowing ease of motion for comfort & fit whilst protecting the metatarsal. Tested in accordance to ASTM F2413-18.



ANTI-STATIC

Boots with Anti-Static properties are designed to reduce the build up of excess static electricity by conducting body charge to the ground. This offers a level of protection against ignition hazards such as flammable materials and gasses.



ELECTRICAL HAZARD EH

Electrical hazard footwear is specifically designed and tested to insulate the wearer from electrical hazards, to reduce the flow of electricity. EH Footwear has been tested to the requirements of ASTM F2413-18. EH shoes should not be used as the primary source of protection in an electrical hazard environment.



RUBBER OUTSOLE

Rubber offers 300° Celsius (572°F) heat resistance. Rubber has excellent resistance to oils, acids and is naturally resistant to hydrolysis.



OIL & SLIP RESISTANT

Sole resistant to fuel oil and rated to SRA slip resistance which is tested using water on ceramic tile.



STEEL CAP

Designed to withstand a force of 200J (Joules) and compression resistance of 1.5 ton. Ethylene Vinyl Acetate (EVA) protective cap liner for added comfort and steel cap protective liner to ensure toes are comfortable and not in contact with the protective safety cap.



WOMEN'S SPECIFIC FIT

Designed and engineered to fit our KingGee women's last, giving comfort whilst still supporting the unique shape of a female foot.



PROTECTIVE TPU TOE BUMPER

Protective Thermoplastic Polyurethane (TPU) toe and heel bumpers provide further abrasion resistance.



SRC SLIP RESISTANCE

SRC offers the most superior slip resistance for all surfaces. (Tested on both ceramic tile floor with SLS solution and steel floor with glycerol).



WATER RESISTANT

Water resistant footwear will repel water so that it soaks in more slowly and are best used when walking through dew or occasionally damp areas.



KINGGEE FOOTWEAR FEATURES



APODA ENDORSED

KingGee and APODA are working together to deliver improved comfort and foot health for all of our end users. Footwear showing this logo have been tried, tested and recommended by experts.

Agion® branded antimicrobial technology makes products cleaner and longer lasting with silver, copper and zinc, which have been proven in use throughout history. Agion® antimicrobial technology provides built in protection by working 24/7 resisting the growth of microbes.

An innovative technology that's cooling, fast drying and wicks moisture away from the foot to keep you cool and dry on hot days, while the fibre structures provide warmth on colder days, optimizing your performance and comfort.

All KingGee footwear showing this logo is certified to AS 2210.3:2019 meeting all Benchmark® requirements under the Australian and New Zealand standards.

Cordura® Fabric to help provide extra protection and durability where it's needed most – resisting abrasion, tear and stress to give support and strength while still being breathable.

The Boa® Fit System is comprised of three integral parts: a micro-adjustable dial, super-strong lightweight laces, and low friction lace guides. Each configuration is engineered to optimize fit and provide precision, adaptability and control.

COSMO™

- Highly abrasion resistant lining
- Keeps you dry and comfortable
- Quick drying hi-tech

DRI-LEX®

Dri-Lex® lining treated with Aegis® anti-microbial. A patented superior mesh designed to manage moisture within a boot environment. Wicks away moisture. Allows your feet to breathe. Keeps your feet dry. Keeps your feet cool.



PORON™ XRD™ is an extreme impact protection pad is durable, lightweight and comfortable. Poron™ XRD™ is designed to withstand multiple hits over time and not break down.



D30® construction provides world class shock absorbing impact lateral & medial ankle protection.



REPVE® is a trusted, branded recycled performance fibre used to make sustainable textiles.

DuPont™ KEVLAR®

DuPont™ Kevlar® aramid fibre is used due it being lightweight, heat resistant and extraordinarily strong, with 5 times the strength of steel on an equal-weight basis. It is about 2.5 times stronger than nylon and polyester, has almost no stretch, does not melt, and decomposes at 800°F.



Scotchgard is a 3M brand of products, a stain and durable water repellent applied to fabric, textiles and leather to protect from fluid, dirt and stains.



Kulkote® Temperature Regulating Technology keeps the foot cool and expels heat.

WELLMAX®

WELLMAX® anti-penetration is a non-metallic, flexible plate Tested and compliant with EN ISO 20345, EN12568 and CSA Z195-02 Standards. The high tech ceramic coated fibres offer greater comfort, lightness, thermal insulating properties and flexibility compared to steel plates.



NatureTex linings are made from recycled plastic bottles.



World leader in the manufacture of fastening systems. YKK® Coil zipper is extremely strong and lightweight, has excellent heat resistance (up to 360°F/ 182°C) and resistance to cold (down to -60°F/ -51°C). Resistance to chemicals further extends the use of YKK® beyond the scope of conventional metal zippers.

FOOTWEAR





CORDURA
FACTORY

King Gee

HYBRID



 **KingGee**

QUANTUM

THE FUTURE OF HYBRID SAFETY IS HERE.

A world first in safety boots, Quantum is light years ahead in function and design. Engineered with HYBRID safety, each step fights fatigue and maximises energy rebound, whether on the worksite, the warehouse or anywhere in between. The Cordura® collar wraps the ankle for added protection and comfort, with D30® built into the medial and lateral acting as a shock absorber for high impact resistance. Kulkote® heat mitigating technology coats the NatureTex linings, absorbing heat energy to create a cooling effect.

QUANTUM

HYBRID SAFETY



AIRPORT FRIENDLY



ANTI-STATIC



COMPOSITE TOE CAP



LIGHT WEIGHT



RUBBER OUTSOLE



SRC SLIP RESISTANCE



COMPRESSION MOLDED EVA



YKK ZIP TECHNOLOGY



KULKOTE® TEMPERATURE REGULATING

Technology keeps the foot cool and expels heat



D30® CONSTRUCTION

Provides world class shock absorbing impact lateral & medial ankle protection



CORDURA® FABRIC

To help provide extra protection and durability where it's needed most – resisting abrasion, tear and stress to give support and strength while still being breathable.



NATURETEX LININGS

Made from recycled plastic bottles

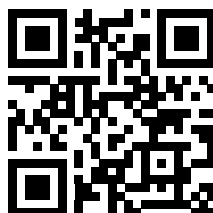
QUANTUM

Quantum - Hybrid Safety

Sizes: AU/UK 4–14 (7.5–10.5)

Colours: Black (K27145), Wheat/Black (K27115), Cedar/Black (K27120)

- Recycled Popcorn PU footbed
- Compression molded EVA midsole provides energy rebound and fights fatigue
- Quick release zip fastener
- ARZ+® heel cushioning + Pad Technology
- TPU toe and heel bumper
- Neoprene padded achilles and heel support
- Lightweight, 745 grams
- Ideal for heavy & light industrial, warehousing, logistics and transport
- Certified to AS 2210.3:2019



SCAN FOR VIDEO

TERRA FIRMA

HYBRID SAFETY



VEGAN FRIENDLY



MEMORY FOAM FOOTBED



SRC SLIP RESISTANCE



WATER RESISTANT



SUSTAINABLE FOOTWEAR



COMPOSITE TOE CAP



LIGHT WEIGHT

TERRA FIRMA

Terra Firma - Hybrid Safety

Sizes: AU/UK 3-14 (Full sizes only)

Colour: Black/Forest Green (K27952), Black/Burnt Orange (K27951)

Lightweight 625g
 SRC Non Slip 300° Rubber Outsole
 Popcorn Injection EVA Triple Density Midsole
 Energy rebound technology
 Quick release zip fastener
 Vegan Friendly Microfiber Upper
 3M Scotchgard® Water Repellent Protection
 Coolmax® and REPREVE® Inner Linings
 Cordura® Collar
 Anti-Static
 Airport Friendly
 Ideal for warehouse / logistics & transport
 Certified to AS 220.3:2019



COOLMAX

An innovative technology that's cooling, fast drying and wicks moisture away from the foot to keep you cool and dry on hot days, while the fibre structures provide warmth on colder days, optimizing your performance and comfort.



SCOTCHGARD

Scotchgard is a 3M brand of products, a stain and durable water repellent applied to fabric, textiles and leather to protect from fluid, dirt and stains.



CORDURA

Cordura fabric to help provide extra protection and durability where it's needed most – resisting abrasion, tear and stress to give support and strength while still being breathable.



SCAN FOR VIDEO

The Terra Firma boots have the right amount of style and protection for any tradie, engineered with HYBRID safety, each step fights fatigue and maximises energy rebound, whether on the worksite, the warehouse or anywhere in between.

These are the lightest safety boots in the market and will not disappoint, A Cordura® collar wraps the ankle for added protection and comfort, with 3M Scotchgard coating the boot to help protect from fluid, dirt & Stains. Innovative Coolmax® technology coats the REPREEVE® inner linings helping to transport moisture away from your foot, through the fabric, where it can evaporate quickly, optimising your performance and comfort.



TRADIE

SIDE ZIP



TRADIE

Tradie 130mm (5 inch) Side Zip

Sizes: Wheat & Black: AU/UK 6–16 (7.5–10.5); Khaki: AU/UK 6–14 (7.5–10.5)
Colour: Wheat (K27100), Black (K27150)

Leather & Breathable Nylon Upper
 Quick release zip fastener
 Dri-Lex® lining with Aegis® Anti-Microbial
 TPU toe bump
 TPU Outsole, PU Midsole
 PU/Memory foam footbed
 This boot contains recycled TPU materials
 Certified to AS 2210.3:2019
 Building & Construction, Landscaping, Gardening & DIY, Farming & Agriculture



MEMORY FOAM
 Sensitive to pressure and moulds perfectly around the contours of your foot. The PU bottom layer provides permanent cushioning and shock absorption.



DRI-LEX® LINING
 Dri-Lex® lining treated with Aegis® anti-microbial. A patented superior mesh designed to manage moisture within a boot environment.



THE TRADIE SERIES

The Tradie series is the tradies go to – ever reliable for safety and comfort. Engineered with a recycled TPU outsole, PU midsole, and a memory foam footbed, you can't put a foot wrong in a pair of Tradies. Ideal for general trade and construction.



TRADIE BOA

Tradie Boa 130mm (5 inch)
Sizes: AU/UK 6-14 (7.5-10.5)
Colour: Wheat (K27170)

TRADIE 6CZ EH

Tradie 6CZ EH 130mm (5 inch) Side Zip
Sizes: AU/UK 6-14 (7.5-10.5)
Colour: Wheat (K27105), Black (K27155)

Leather & Breathable Nylon Upper
 BOA® Fit System
 TPU Toe Bump
 PU / Memory foam footbed
 Dri-Lex® lining with Aegis® Anti-Microbial
 TPU Outsole, PU Midsole
 Certified to AS 2210.3:2019



Leather & Breathable Nylon Upper
 Quick release zip fastener
 TPU Outsole, PU Midsole
 PU / Memory foam footbed
 Cosmo® Lunar Lining with Anti-Microbial treatment
 Extra Internal heel cushioning
 Certified to AS 2210.3:2019
 EH tested to ASTM F2413-18 (American Standard)



TRADIE PUNCTURE RESISTANT

Tradie Puncture Resistant 130mm (5 inch)
Sizes: AU/UK 6-14 (7.5-10.5)
Colour: Wheat (K27125)

PHOENIX 6C EH MET

Phoenix 6C EH MET 150mm (6 inch) Lace
Sizes: AU/UK 3-16 (7.5-10.5)
Colour: Wheat (K27872)

Wellmax® puncture resistant plate
 Leather & Breathable Nylon Upper
 Quick release zip fastener
 Cosmo® Lunar lining with Aegis® Anti-Microbial
 TPU toe bump
 TPU Outsole, PU Midsole
 PU/Memory Foam Footbed
 Certified to AS 2210.3:2019



Water Resistant Full-Grain Leather
 Kevlar® stitching on TPU Toe Bump
 Rubber Outsole, PU Midsole
 PU / Memory foam footbed
 Cosmo® Lunar Lining with Anti-Microbial treatment
 Certified to AS 2210.3:2019
 EH tested to ASTM F2413-18 (American Standard)





FLINDERS

Flinders Gusset

Sizes: AU/UK 3–13 (7.5–10.5)

Colour: Sand Suede (K25180), Claret Full Grain (K25500)

Full Grain Leather Upper
 Triple stitching to stress points
 Extra Long Pull-on Loops
 Dri-Lex® lining with Aegis® Anti-Microbial
 PU / Memory foam footbed
 TPU Outsole, PU Midsole
 Certified to AS 2210.3:2019





TRADIE GUSSET

Tradie Gusset

Sizes: AU/UK 6–14 (7.5–10.5)

Colour: Wheat (K25200), Black (K25250)

Full Grain Leather Upper
 PU / Memory foam footbed
 Dri-Lex® lining with Aegis® Anti-Microbial
 TPU toe bump
 Extra long pull on loops
 TPU Outsole, PU Midsole
 Certified to AS 2210.3:2019



WILLS

Wills Gusset

Sizes: AU/UK 3–13 (7.5–10.5)

Colour: Sand Suede (K25552)

Triple stitching to stress points
 Kevlar® Stitched TPU Toe & Heel Bumper
 Extra Long Pull-on Loops
 Dri-Lex® lining with Aegis® Anti-Microbial
 PU / Memory foam footbed
 TPU Outsole, PU Midsole
 Certified to AS 2210.3:2019





King Gee
K29006 - SAFETY GUMBOOT

SAFETY GUMBOOT
SAMPLE ONLY - DO NOT WEAR
THIS PRODUCT IS NOT CERTIFIED.

Australian Standard
AS 2210.3.2019
Class II Design D SB SRA P A FO



-  STEEL CAP
-  ANTI-STATIC
-  SRC SLIP RESISTANCE
-  RUBBER OUTSOLE
-  MEMORY FOAM FOOTBED

GRIP 3000

Grip 3000 Sport Safety
Sizes: AU/UK 4–13 (Full sizes only)
Colour: Black (K26540)

Wide profile safety steel toe
 Canvas upper
 SRC rated for max slip resistance
 Padded collar
 Memory foam footbed
 Rubber toe bump
 Certified to AS 2210.3:2019



-  WATER RESISTANT
-  GENUINE LEATHER
-  SRC SLIP RESISTANCE
-  OIL & SLIP RESISTANT
-  LIGHT WEIGHT

SUPERLITE

Superlite
Sizes: AU/UK 6–13 (Half sizes 7.5–10.5)
Colour: Black (K22245)

Soft full grain leather with internal cushioning
 Lightweight running shoe construction
 Removable memory foam footbed
 Water resistant upper



-  STEEL CAP
-  OIL & SLIP RESISTANT
-  PUNCTURE RESISTANT
-  WATER PROOF
-  ANTI-STATIC

HYDROGUARD GUMBOOT

Hydroguard Safety Gumboot
Sizes: AU/UK 4–13 (Full sizes only)
Colour: Black (K29006)

Steel Toe
 Penetration resistant
 Waterproof PVC Upper
 SRA Slip resistance
 Oil resistant
 PVC Outsole
 Anti-Static
 2 Trim heights
 Certified to AS 2210.3:2019



-  WATER PROOF

SLUDGE GUMBOOT

Sludge Non Safety Gumboot
Sizes: AU/UK 4–13 (Full sizes only)
Colour: Black (K29007)

Waterproof PVC upper
 Oil resistant
 PVC Outsole
 2 Trim heights



WOMEN'S TRADIE ST

Women's Tradie 130mm (5 inch) Side Zip

Sizes: AU/US 4-11 (Half sizes 5.5-10.5)

Colour: Wheat (K26491), Black (K26490)

Engineered fit to the KingGee women's last
Leather & Breathable Nylon Upper
Elasticated Neoprene Comfort Collar
Quick release zip fastener
Dri-Lex® lining with Aegis® Anti-Microbial
Recycled pre-consumer TPU outsole and toe bump
PU Midsole
Certified to AS 2210.3:2019





- WOMEN'S SPECIFIC FIT
- COMPOSITE TOE CAP
- ELECTRICAL HAZARD
- RUBBER OUTSOLE
- LIGHT WEIGHT

WOMEN'S TRADIE

Women's Tradie 150mm (6 inch) Side Zip
Sizes: AU/US 4–11 (Half sizes 5.5–10.5)
Colour: Wheat (K27380), Black (K27360)

Water Resistant Full Grain Leather
 Quick release zip fastener
 Breathable & Light Oxford fabric tongue
 Additional under foot Phylon Interlayer
 Gel Technology sports performance footbed
 Cushioned EVA midsole
 Durable Rubber outsole
 Certified to AS 2210.3:2019
 EH tested to the ASTM F2413-18 (American Standard)



- WOMEN'S SPECIFIC FIT
- GENUINE LEATHER
- OIL & SLIP RESISTANT
- SRC SLIP RESISTANCE
- LIGHT WEIGHT

WOMEN'S SUPERLITE

Women's Superlite Slip-On
Sizes: AU/US 4–11 (Half sizes 5.5-10.5)
Colours: Black (K22340)

Water resistant soft full grain leather
 Ultra comfort footbed
 Rated SRC Max slip resistant
 Lightweight running shoe construction



- WOMEN'S SPECIFIC FIT
- COMPOSITE TOE CAP
- ELECTRICAL HAZARD
- RUBBER OUTSOLE
- AIRPORT FRIENDLY

WOMEN'S TRADIE GUSSET

Women's Tradie Gusset
Sizes: AU/US 4–11 (Half sizes 5.5–10.5)
Colour: Black (K27390)

Water Resistant Full Grain Leather
 Additional under foot Phylon Interlayer
 Gel Technology sports performance footbed
 Cushioned EVA midsole
 Durable Rubber outsole
 Strong breathable mesh lining
 Certified to AS 2210.3:2019
 EH tested to the ASTM F2413-18 (American Standard)



- WOMEN'S SPECIFIC FIT
- GENUINE LEATHER
- OIL & SLIP RESISTANT
- SRC SLIP RESISTANCE
- LIGHT WEIGHT

WOMEN'S SUPERLITE

Women's Superlite Lace-Up
Sizes: AU/US 4–11 (Half sizes 5.5-10.5)
Colours: Black (K22300)

Water resistant soft full grain leather
 Ultra comfort footbed
 Rated SRC Max slip resistant
 Lightweight running shoe construction







FOOTWEAR SIZE GUIDE

HOW TO WORK OUT YOUR SHOE SIZE

MEN'S EEE fit																		
AUS/UK	5	5.5	6	6.5	7	7.5	8	8.5	9	9.5	10	10.5	11	12	13	14	15	16
USA	6	6.5	7	7.5	8	8.5	9	9.5	10	10.5	11	11.5	12	13	14	15	16	17
European	39	39.5	40	40.5	41	41.5	42	42.5	43	43.5	44	44.5	45	46	47	48	49	50

WOMEN'S (For women's specific styles) D fit													
AUS/USA	5	5.5	6	6.5	7	7.5	8	8.5	9	9.5	10	10.5	11
UK	3	3.5	4	4.5	5	5.5	6	6.5	7	7.5	8	8.5	9
European	35	36	37	37.5	38	38.5	39	39.5	40	40.5	41	41.5	43

The grey shaded boxes show the Men's to Women's equivalent sizes for unisex sized footwear. For example, a Men's AUS/UK 5 is equivalent to a Women's AUS/USA 7. Please Note: Unisex sizes are wider fits for women than women's specific footwear.



OUR QUALITY STANDARDS

We understand work can be demanding and stressing at times. KingGee garments are designed to facilitate your everyday.

Our Design and Quality departments spends a lot of effort to make sure KingGee products are comfortable, functional and presentable for as long as possible.

- Third party laboratory for physical performance and colour fastness properties.
- All shades are controlled visually and via spectral analysis to ensure consistency of uniforms.
- All new products introduced in the market place are wear tested with real workers prior to the launch.
- All marketing claims are systematically tested and part of the product specifications.

KingGee, a brand under The Workwear Group, continuously review standards and trends within the industry and are constantly pushing the boundaries so that customers are getting quality products that are both safe and fashionable. Quality is paramount in KingGee and we will never sacrifice it. KingGee products comply with:

- High Visibility Australian Standards Compliant AS/NZS 1906.4 & AS 4602.1
- UPF Australian Standard AS/NZS 4399:2020
- Boots – Safety Footwear Standard AS/NZS 2210.3C & AS/NZS 2210.3:2009



The Workwear Group, who owns KingGee, achieves the highest workplace standards. Australian Standards Compliance AS/NZS ISO 9001:2015 Quality Management System

ISO 9001 – QUALITY MANAGEMENT SYSTEMS

ISO 9001 is a quality management system (QMS) standard that requires an organisation to meet it's own requirements and those of it's customers and regulators. It is based on the plan-do-check-act methodology, which helps organisations establish, implement, monitor and measure their processes to deliver results that align with the organisation's requirements and continually improve performance by taking appropriate action.

BOOT SAFETY STANDARDS

AUSTRALIAN AND NEW ZEALAND SAFETY STANDARD – AS/NZS 2210.3:2009 AS 2210.3:2019

Every safety boot sold in Australia has to pass the latest Australia and New Zealand Standards for protective and occupational footwear (currently AS 2210.3:2019).

Each style must be tested by an independent and authorised laboratory and then certified by a worldwide recognised organisation where each component of the boot is tested (fabric, sole, thread, lining, etc.).

BONDING TEST

Measures the force required to separate the upper from the sole unit or to separate different layers within the sole unit, i.e. separate midsole from outsole. Material tearing is part of the assessment when the force required to tear the material itself apart is lower than the bonding strength between two different materials and also lower than the bonding requirement then material failure will occur.

COMPRESSION TEST

This test measures the resistance of a toe cap being compressed by an upper plate with a pressing force 15kN = 1.5ton. The clearance between the toes and the toe cap must be over 12.5mm or 15mm depending on sizes.

IMPACT TEST

Each toe cap has to pass the impact resistance test explained in the standard AS 2210.3:2019. After the drop of a 20kg striker with a force of 200J, the clearance between your toes and the toe cap must be between 12.5mm to 15mm depending on sizes.

KINGGEE FOOTWEAR FEATURES

QUALITY UPPERS

Our KingGee footwear are made with attention to detail using the finest quality materials that will mold to the shape of your feet, allowing them to breath.

Leather is a natural material that is made from animal hide that has been tanned. It is among the oldest of human inventions. In ancient times, the gatherers and hunters used leather as their protective clothing and for warmth.

KingGee cowhide leather is flexible, breathable and supple. Cowhide leather looks good dyed or left natural. It's durable, ages well and lasts up to five times longer than fabric. Its properties of toughness and tear and puncture resistance are the reason it is used in our boots. It naturally repels moisture, retains its shape, and resists sun and heat damage.

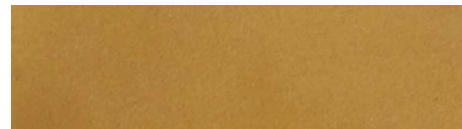


FULL-GRAIN LEATHER

KingGee full-grain leather workboots use cow hides which are not sanded or buffed, and are naturally tanned resulting in the hides having excellent breathability and a true softness in the leather.

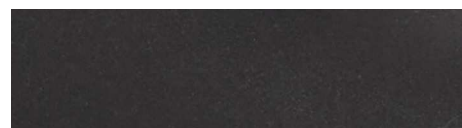
Owing to the fact that this type of leather is not sanded, the natural marks on the hide are sometimes visible.

KingGee full-grain leather is very reliable and strong. This is because the grain has not been removed. Thus the fibre strength and the toughness of the hide are still retained in the leather. Full-grain leather does not wear out; instead a patina will be developed over time. Full-grain leather also has better breathability than other types of leather. Owing to the strength of this type of leather, it is used in the production of KingGee workboots.



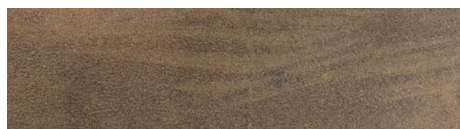
3D NUBUCK

Full Grain Nubuck that has had the moisture and water content removed from the original base leather. This creates a lightweight, high flexibility and stronger leather that also has a high degree of water resistance. 3D Nubuck is a propriety manufacturing technology.



MICROFIBRE

Microfibre is a synthetic upper material, made from a combination of high performance fibres that are coated with a layer of resin. Microfibre has high levels of wear and water resistance and is an animal friendly alternative to traditional leathers.



CRAZY HORSE LEATHER

Crazy Horse Leather is sometimes known as "saddle leather" and is treated with oil and wax in a unique tanning process to the surface of the leather. During this process, the oil and wax surface to create a rich, beautiful patina that's fade-resistant.

When the leather is rubbed, the colour will change and will not immediately reverse, giving it an antique look.

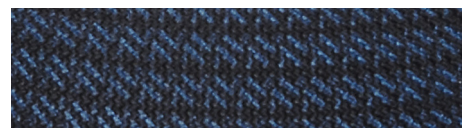


NUBUCK LEATHER

KingGee Nubuck leather has a soft, velvety surface and is the premium choice in leather. Nubuck is sanded on the outer surface of the leather, essentially the part that would have been the exterior skin of the animal.

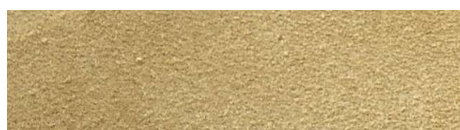
Since the outside layer of a skin is much tougher, Nubuck lasts much longer than suedes and responds very well to this sanding process. It does show imperfections in the exterior layer of the skin much more easily, and is often treated with dyes, sometimes simply clear ones, to disguise any significant flaws.

Nubuck is subject to easy staining and often requires pre-treatment or stain-resistance protection to extend its life.



ENGINEERED KNIT

Engineered knit is fibre that is woven together to form a durable textile material. It allows for more flexibility, breathability and stretch compared to traditional leather uppers. It is extremely lightweight and is optimal for use where comfort and fit are essential. As it is a woven textile, generally this material is not as durable as traditional leather uppers.



SUEDE LEATHER

KingGee suede leathers are sanded to produce the velvet-soft feel that is typical of high-grade suede. This feel is achieved by sanding the inner layer of the cow hide.

Because it comes from a thinner piece of hide, suede is less durable than full-grain leather. The suede texture of the material also makes it more susceptible to damage from water and stains. However, because several pieces of suede can be produced from a single hide, it is less expensive than full-grain leather.

FOOTWEAR CARE GUIDES

BOOT CARE GUIDE

A good pair of work boots is an investment into your safety, by looking after them with regular care and maintenance you will get more wear out of your boots, making them last longer.

HOW TO CLEAN

Full Grain Smooth Leather: Remove any excess dirt and clean with a damp cloth, leave to air dry and then apply a dubbin cream to keep the leather soft and protected.

Suede and Nubuck Leather: Brush with a shoe suede brush then apply a waterproofing agent, we do not advise cleaning with water as can affect the material and nubuck colour.

Outsoles: Clean by brushing excess dirt, using a nylon brush through the tread if necessary and washing to remove contaminants then leave to air dry.

Footwear should not be cleaned with solvents and should not be force dried, forced drying can cause the leather to distort, harden and even crack. Never put wet boots in front of a heater or direct sunlight to dry. Dry shoes naturally indoors.

STORAGE

Store your shoes in a cool, dry place away from direct sunlight.

FOOTBED RECOMMENDATIONS

Always replace the footbed with the same brand and type of footbed, and avoid any unauthorised footwear alterations, e.g. mechanical stretching or adding vent holes as this may:

- a) Take the footwear out of compliance with the relevant standard.
- b) Void any approval or certification of the footwear.
- c) Reduce the effectiveness of the footwear.

FOOTBED CARE

Like any footwear, the life of the insoles depends on how often they are worn, the intensity of the activity used for, and how well they are cared for.

Your insoles will air out best if slipped slightly out of your shoes between uses.

To clean your KingGee insoles, brush them clean or wipe them lightly with a damp cloth.

Do not soak the insoles.

Do not machine wash or dry the insoles; nor dry clean.

Do not expose the insoles to excessive heat.





KingGee

Workwear Group

Level 1, 187 Todd Road,
Port Melbourne VIC 3207

ABN 82 004 055 387

Customer Service 1800 720 544

kinggee.com.au