



# WORKWEAR

## CATALOGUE



VOLUME 10

“IT’S GOTTA BE RITEMATE”

# RITEMATE WORKWEAR

is an innovative workwear brand that is rapidly expanding on the Australian market.

Having a major involvement in the Australian textile and clothing industry over the last thirty years, the executives of Ritemate bring a wealth of experience and knowledge to a growing range of high quality products that are fast gaining popular consumer recognition amid a myriad of high profile workwear names.

When asked "what is the point of difference between Ritemate Workwear and other more well known and longer established brands", we are proud to say that though Ritemate is 'the new kid on the block', our vast experience and wealth of knowledge within the textile and clothing industry allows us to offer consumers, through selected stockist a range of high quality work wear products with value for money in the Ritemate brand. Ritemate is backed up by the three important elements essential to the needs of consumers: "Service, Quality and Price". Our highly reputable parent company was established in 1977 and we would never have been around for that long without recognising the needs of our customers and following through with a service attitude that we believe is second to none"

Styling, fit and fabric performance are key features in the Ritemate range of industrial workwear and high visibility safety garments. Ritemate General Manager, David Mair says "Practical designs, wearing comfort and hard wearing fabrics all combine to give our exciting new brand the acceleration that we are currently experiencing in this broad spectrum work wear market".

The distinctive and iconic Ritemate logo with the hand giving the proverbial 'thumbs up' sign is all about the Aussie larrikin attitude so I guess the accompanying caption says it all:

**"IT'S GOTTA BE RITEMATE"**





# CONTENT

## SHIRTS

RM1050R	2 tone open front long sleeve shirt with 3M 8910 reflective tape	6
RM1050RS	2 tone open front short sleeve shirt with 3M 8910 reflective tape	8
RM1050	2 tone open front long sleeve shirt	9
RM1050S	2 tone open front short sleeve shirt	11
RM106XR	Open front long sleeve shirt with "X" back 3M 8910 reflective tape	12
RM109VXR	Vented light weight open front long sleeve shirt with "X" back 3M 8910 reflective tape	13
RM105CFR	2 tone closed front long sleeve shirt with 3M 8910 reflective tape	14
RM105CF	2 tone closed front long sleeve shirt	15
RM105CFS	2 tone closed front short sleeve shirt	16
RM104CFR	Closed front long sleeve shirt with 3M 8910 reflective tape	17
RM1040R	Open front long sleeve shirt with 3M 8910 reflective tape	18
RM1000	Open front long sleeve shirt	21
RM1000S	Open front short sleeve shirt	22
RM100CF	Closed front long sleeve shirt	23
RM100CFS	Closed front short sleeve shirt	24
RM208V2R	Ladies 2 tone vented light weight open front long sleeve shirt with 3M 8910 reflective tape	25
RM208V3R	Ladies vented light weight open front long sleeve shirt with 3M 8910 reflective tape	26
RM107V2	2 tone vented light weight open front long sleeve shirt	28
RM107V2S	2 tone vented light weight open front short sleeve shirt	29
RM107V2R	2 tone vented light weight open front long sleeve shirt with 3M 8910 reflective tape	30
RM107V2RS	2 tone vented light weight open front short sleeve shirt with 3M 8910 reflective tape	31
RM108V3	Vented light weight open front long sleeve shirt	32
RM108V3R	Vented light weight open front long sleeve shirt with 3M 8910 reflective tape	33
RM400CF	Children's Pilbara closed front long sleeve shirt	34
RM4050R	Children's 2 tone open front long sleeve shirt with reflective tape	35
RM200CF	Pilbara men's closed front long sleeve shirt	36
RM300CF	Pilbara ladies closed front long sleeve shirt	39
RM500BT	Pilbara men's open front long sleeve shirt	40
RM200CFS	Pilbara men's closed front short sleeve shirt	42
RM500BTS	Pilbara men's open front short sleeve shirt	43
RM123FCF & RM123QS	Flannelette garments	44
RM123V & RM123FOF	Flannelette garments	45
RM2346	Hi viz long sleeve polo shirt	74
RM2346S	Hi viz short sleeve polo shirt	75

## PANTS

RM1002	Belt loop drill trouser	46
RM1002R	Belt loop drill trouser with 3M 8910 reflective tape	48
RM1004R	Cargo trouser with 3M 8910 reflective tape	49
RM1004	Cargo trouser	51
RM8080	Light weight 8080 cargo trouser – unisex trouser	55
RM1007	Mid weight cargo trouser	59
RM411CP	CORDURA® cargo trouser	63
RM106DJ	Denim jeans	66
RM106DJR	Denim jeans with 3M 8910 reflective tape	67
RM110SD	Stretch denim jeans	68
RM110SDR	Stretch denim jeans with 3M 8910 reflective tape	69
RM220LSD	Ladies stretch denim jeans	72
RM220LSDR	Ladies stretch denim jeans with 3M 8910 reflective tape	73

## SHORTS

RM1002S	Belt loop and side tab combo short	52
RM1004S	Cargo short	53
RM4040	Light weight 4040 cargo short – unisex short	54
RM33EWLS	Elastic waist long leg short	56
RM301EWS	Elastic waist rugby short	58
RM411CS	CORDURA® cargo short	64
RM112TSD	Denim Trucker Short (Jean Short)	71

## COVERALLS

RM1008M	Coverall	60
RM908CR	2 tone coverall with 3M 8910 reflective tape	61
RM909AR	2 tone action back overall with 3M 8910 reflective tape	62

## OUTER WEAR

RM4245	Hi viz vest	76
RM4245T	Day/night vest with 3M reflective tape	77
RM6012	Half zip fleecy pullover	78
RM6012R	Half zip fleecy pullover with 3M reflective tape	79
RM5071R	2 tone 100% cotton drill jacket with 3M 8910 reflective tape	80
RM73N1R	4 in 1 two tone 100% cotton drill jacket with 3M 8910 reflective tape	81

# RM1050R

2 tone open front long sleeve shirt with 3M 8910 reflective tape

### FEATURES

- Superior garment assembly, twin needle stitching and bar tacks for extra strength
- UPF 50+ meets Australian standard AS/NZS 4399:1996
- Meets Australian standard AS/NZS 1906.4:2010 & AS/NZS Q4602.1:2011 for high visibility day/night wear

### SIZE

XS - 5XL (2XS available in Pink/Navy, Blue/Navy, Emerald/Navy)

### WEIGHT

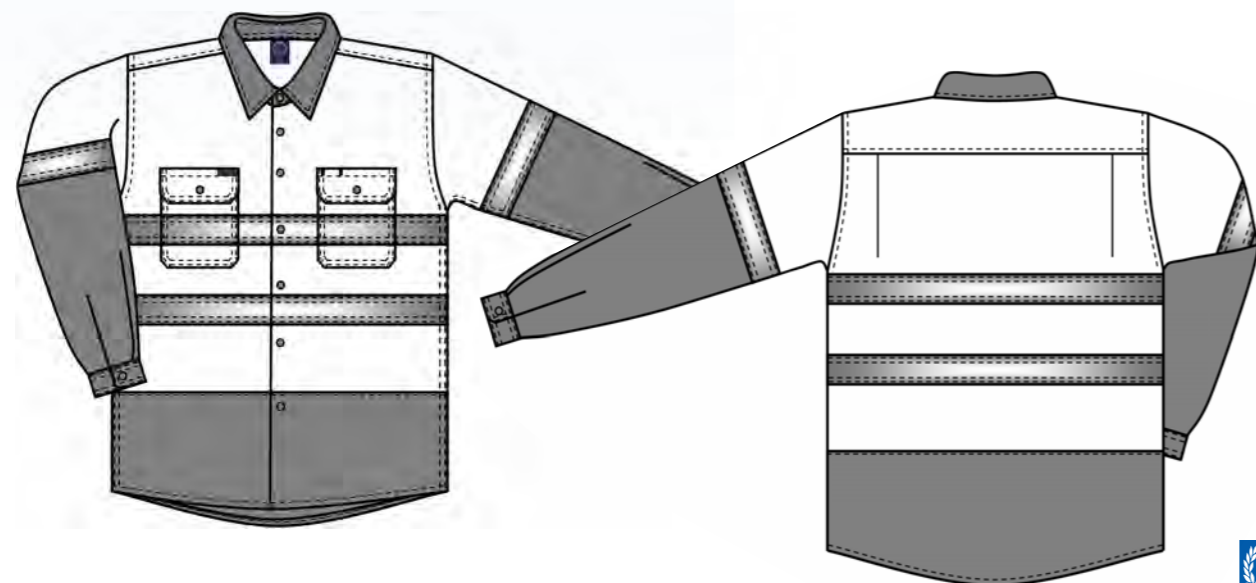
Regular weight - 190gsm

### QUALITY

Premium quality mercerized, double pre-shrunk, 100% cotton twill

### COLOURS

Yellow/Navy, Orange/Navy, Yellow/Bottle, Pink/Navy (for night use only), Blue/Navy (for night use only), Emerald/Navy (for night use only)



# “IT’S GOTTA BE RITEMATE”



# RM1050RS

2 tone open front short sleeve shirt with 3M 8910 reflective tape

### FEATURES

- Superior garment assembly, twin needle stitching and bar tacks for extra strength
- UPF 50+ meets Australian standard AS/NZS 4399:1996
- Meets Australian standard AS/NZS 1906.4:2010 & AS/NZS Q4602.1:2011 for high visibility day/night wear

### SIZE

XS - 5XL (2XS available in Pink/Navy, Blue/Navy, Emerald/Navy)

### WEIGHT

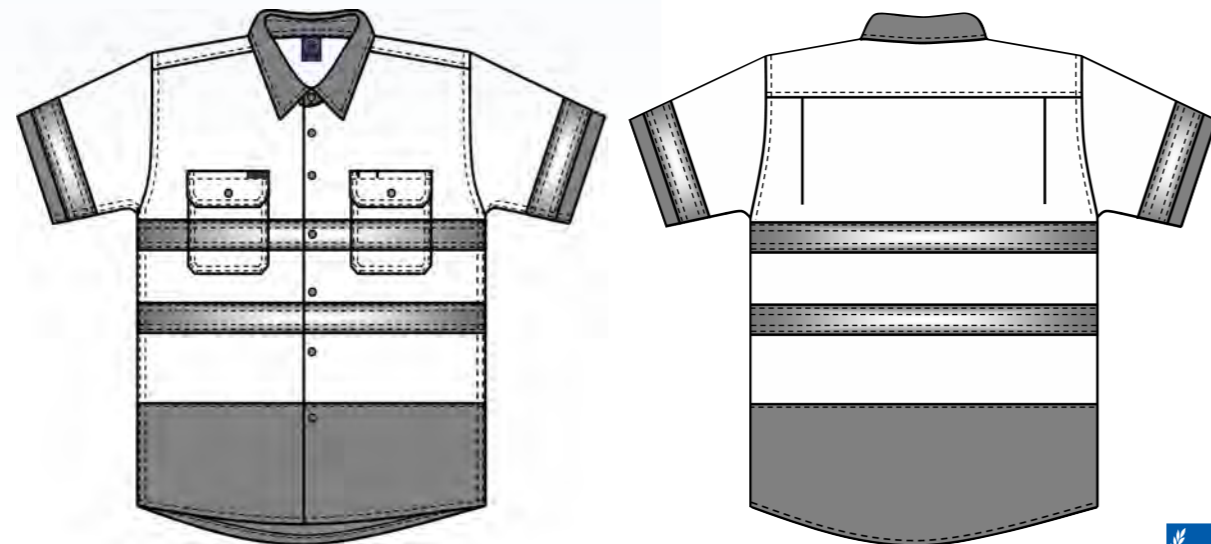
Regular weight - 190gsm

### QUALITY

Premium quality mercerized, double pre-shrunk, 100% cotton twill

### COLOURS

Yellow/Navy, Orange/Navy, Yellow/Bottle, Pink/Navy (for night use only), Blue/Navy (for night use only), Emerald/Navy (for night use only)



# RM1050

2 tone open front long sleeve shirt

### FEATURES

- Superior garment assembly, twin needle stitching and bar tacks for extra strength
- UPF 50+ meets Australian standard AS/NZS 4399:1996
- Meets Australian standard AS/NZS 4602.1:2011 for high visibility day wear

### SIZE

XS - 5XL

### WEIGHT

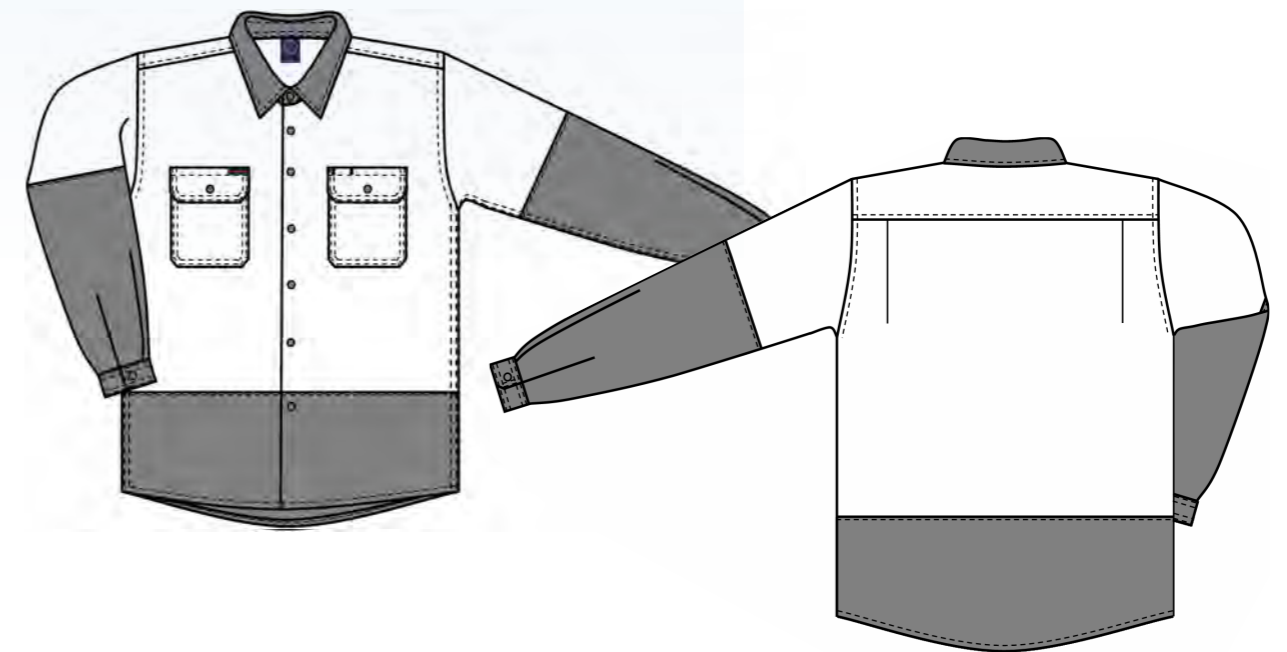
Regular weight - 190gsm

### QUALITY

Premium quality mercerized, double pre-shrunk, 100% cotton twill

### COLOURS

Yellow/Navy, Orange/Navy, Yellow/Bottle,



**“IT’S GOTTA BE RITEMATE”**

## RM1050S



### 2 tone open front short sleeve shirt

#### FEATURES

- Superior garment assembly, twin needle stitching and bar tacks for extra strength
- UPF 50+ meets Australian standard AS/NZS 4399:1996
- Meets Australian standard AS/NZS 4602.1:2011 for high visibility day wear

#### SIZE

XS - 5XL

#### WEIGHT

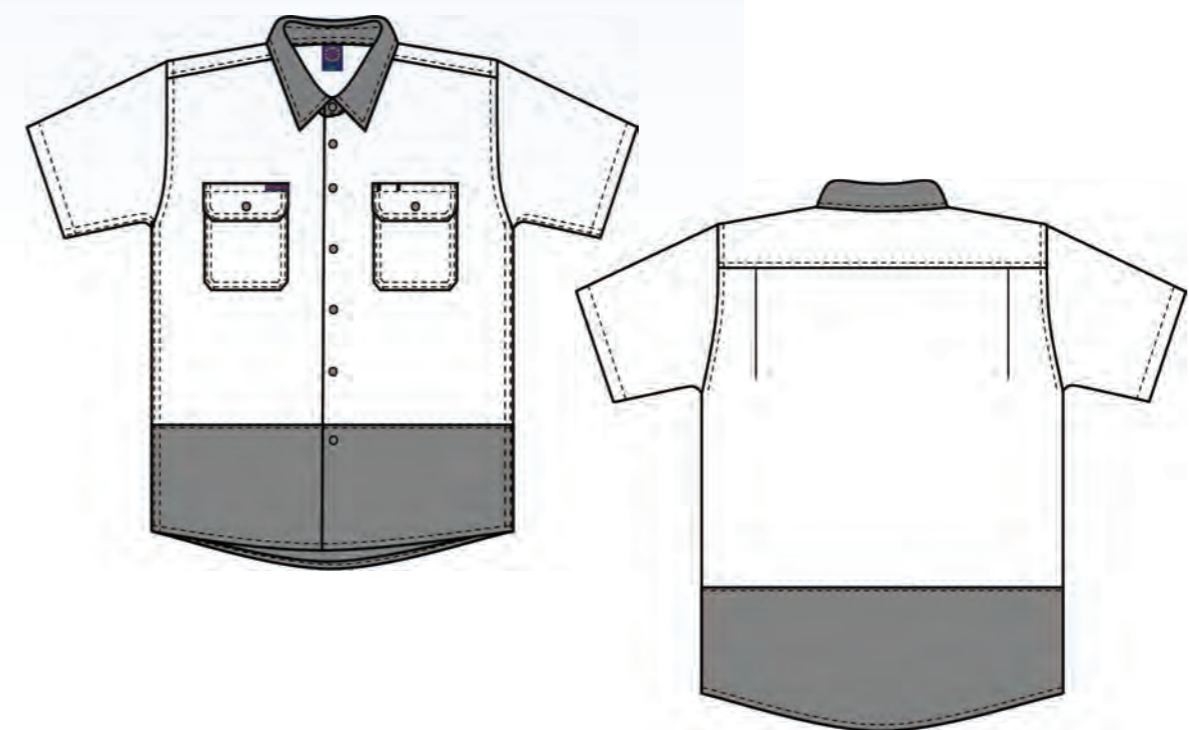
Regular weight - 190gsm

#### QUALITY

Premium quality mercerized, double pre-shrunk, 100% cotton twill

#### COLOURS

Yellow/Navy, Orange/Navy



# RM106XR

Open front long sleeve shirt with "X" back 3M 8910 reflective tape

### FEATURES

- Superior garment assembly, twin needle stitching and bar tacks for extra strength
- UPF 50+ meets Australian standard AS/NZS 4399:1996
- Meets Australian standard AS/NZS 1906.4:2010 & AS/NZS 4602.1:2011 for high visibility day/night wear
- Available in short sleeve upon request

### SIZE

XS - 5XL

### WEIGHT

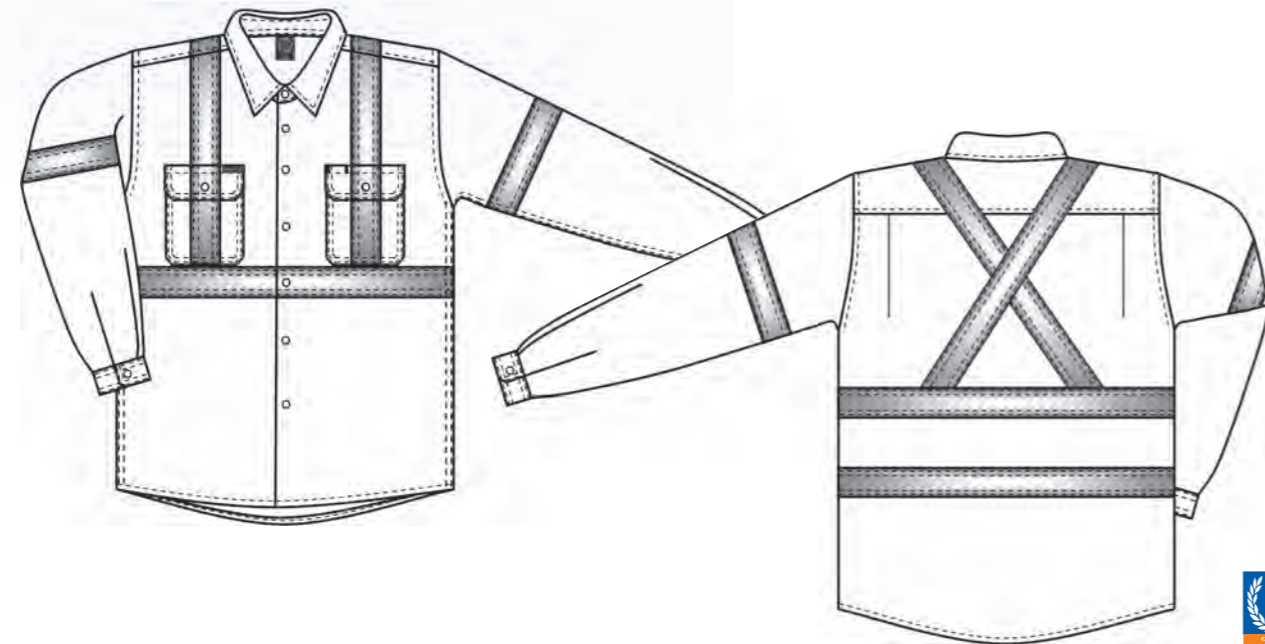
Regular weight - 190gsm

### QUALITY

Premium quality mercerized, double pre-shrunk, 100% cotton twill

### COLOURS

Orange



# RM109VXR

Vented light weight open front long sleeve shirt with "X" back 3M 8910 reflective tape

### FEATURES

- Cotton mesh cooling vents located at underarm and shoulder positions
- Superior garment assembly, twin needle stitching and bar tacks for extra strength
- UPF 50+ meets Australian standard AS/NZS 4399:1996
- Meets Australian standard AS/NZS 1906.4:2010 & AS/NZS 4602.1:2011 for high visibility day/night wear
- Available in short sleeve upon request

### SIZE

XS - 5XL

### WEIGHT

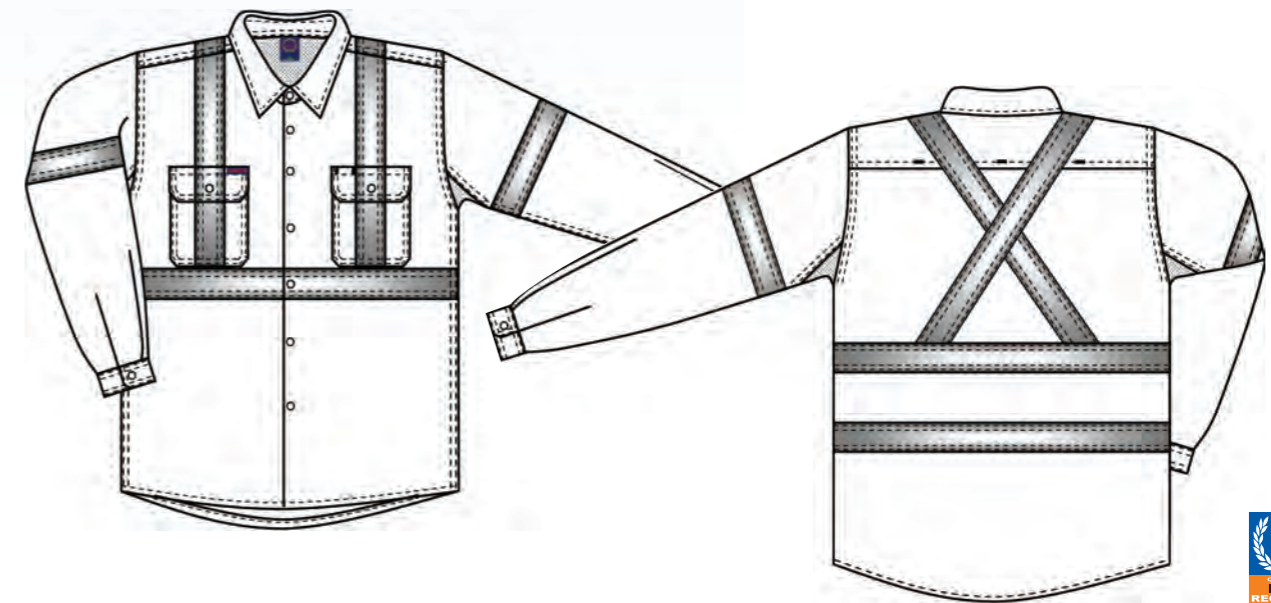
Light weight - 150gsm

### QUALITY

Premium quality mercerized, double pre-shrunk, 100% cotton twill

### COLOURS

Orange



# RM105CFR

2 tone closed front long sleeve shirt with 3M 8910 reflective tape

### FEATURES

- Superior garment assembly, twin needle stitching and bar tacks for extra strength
- UPF 50+ meets Australian standard AS/NZS 4399:1996
- Meets Australian standard AS/NZS 1906.4:2010 & AS/NZS 4602.1:2011 for high visibility day/night wear
- Available in short sleeve upon request

### SIZE

XS - 5XL

### WEIGHT

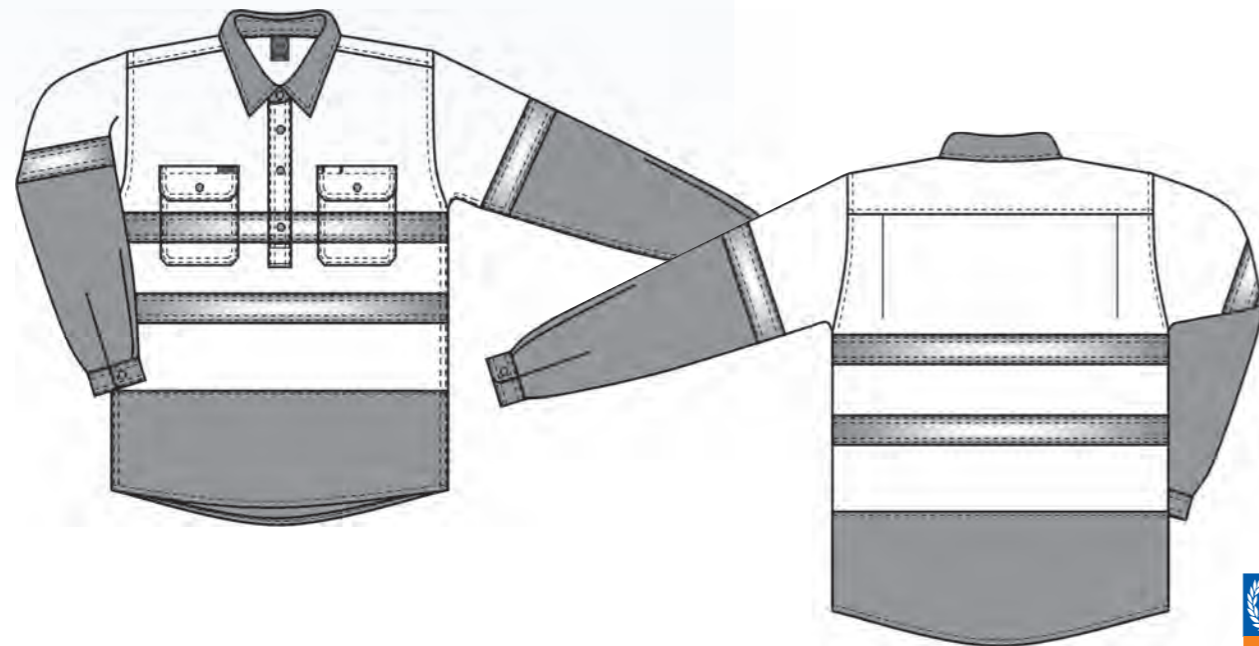
Regular weight - 190gsm

### QUALITY

Premium quality mercerized, double pre-shrunk, 100% cotton twill

### COLOURS

Yellow/Navy, Orange/Navy



# RM105CF

2 tone closed front long sleeve shirt

### FEATURES

- Superior garment assembly, twin needle stitching and bar tacks for extra strength
- UPF 50+ meets Australian standard AS/NZS 4399:1996
- Meets Australian standard AS/NZS 4602.1:2011 for high visibility day wear

### SIZE

XS - 5XL

### WEIGHT

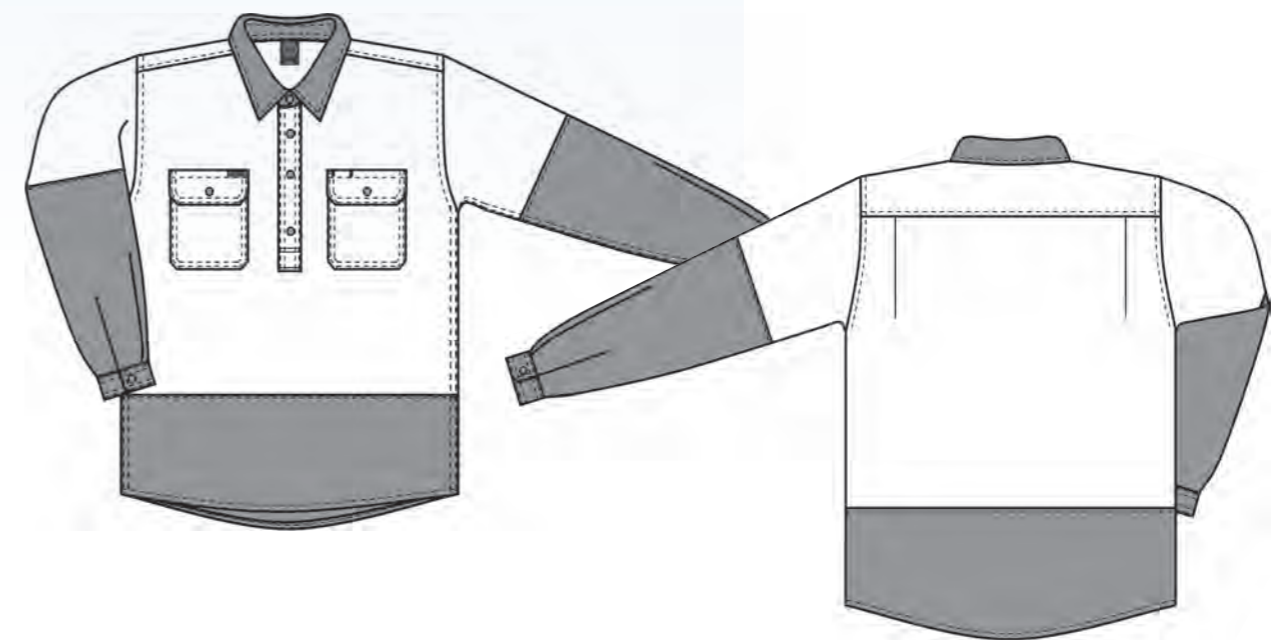
Regular weight - 190gsm

### QUALITY

Premium quality mercerized, double pre-shrunk, 100% cotton twill

### COLOURS

Yellow/Navy, Orange/Navy, Yellow/Bottle



# RM105CFS

## 2 tone closed front short sleeve shirt

### FEATURES

- Superior garment assembly, twin needle stitching and bar tacks for extra strength
- UPF 50+ meets Australian standard AS/NZS 4399:1996
- Meets Australian standard AS/NZS 4602.1:2011 for high visibility day wear

### SIZE

XS - 5XL

### WEIGHT

Regular weight - 190gsm

### QUALITY

Premium quality mercerized, double pre-shrunk, 100% cotton twill

### COLOURS

Yellow/Navy, Orange/Navy, Yellow/Bottle



# RM104CFR

## Closed front long sleeve shirt with 3M 8910 reflective tape

### FEATURES

- Superior garment assembly, twin needle stitching and bar tacks for extra strength
- UPF 50+ meets Australian standard AS/NZS 4399:1996
- Meets Australian standard AS/NZS 1906.4:2010 & AS/NZS 4602.1:2011 for high visibility day/night wear
- Available in short sleeve upon request

### SIZE

XS - 5XL

### WEIGHT

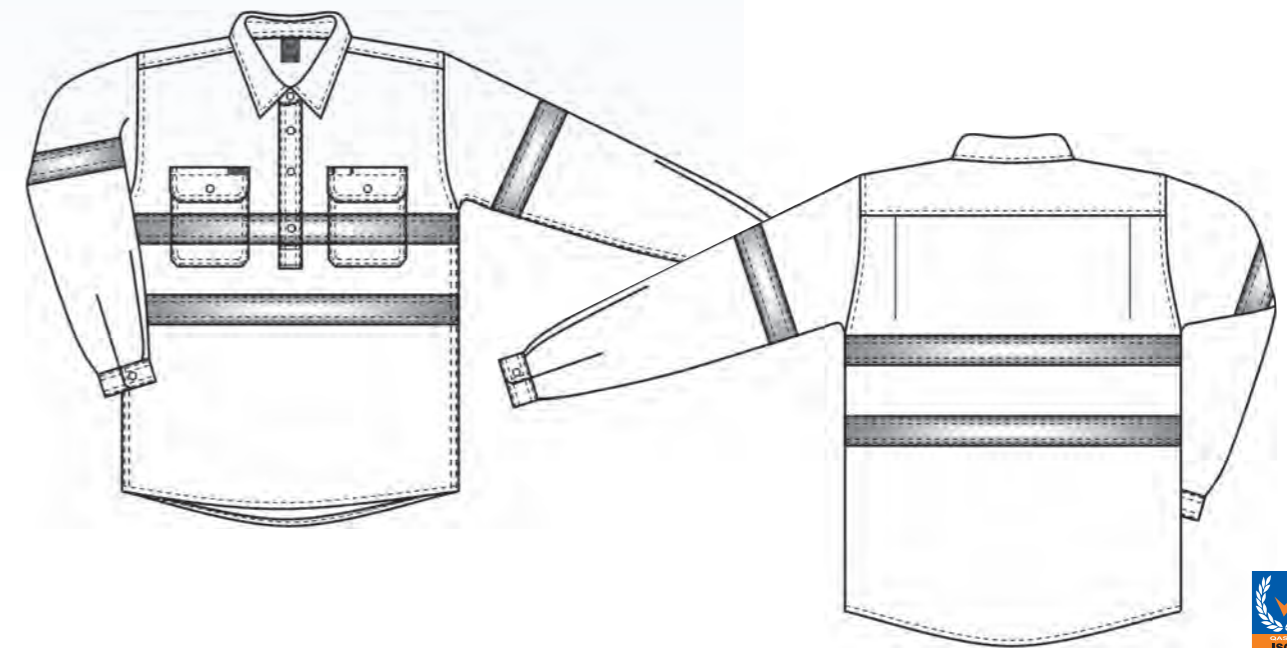
Regular weight - 190gsm

### QUALITY

Premium quality mercerized, double pre-shrunk, 100% cotton twill

### COLOURS

Orange



# RM1040R

Open front long sleeve shirt with 3M 8910 reflective tape

## FEATURES

- Superior garment assembly, twin needle stitching and bar tacks for extra strength
- UPF 50+ meets Australian standard AS/NZS 4399:1996
- Meets Australian standard AS/NZS 1906.4:2010 & AS/NZS 4602.1:2011 for high visibility day/night wear
- Available in short sleeve upon request

## SIZE

XS - 5XL

## WEIGHT

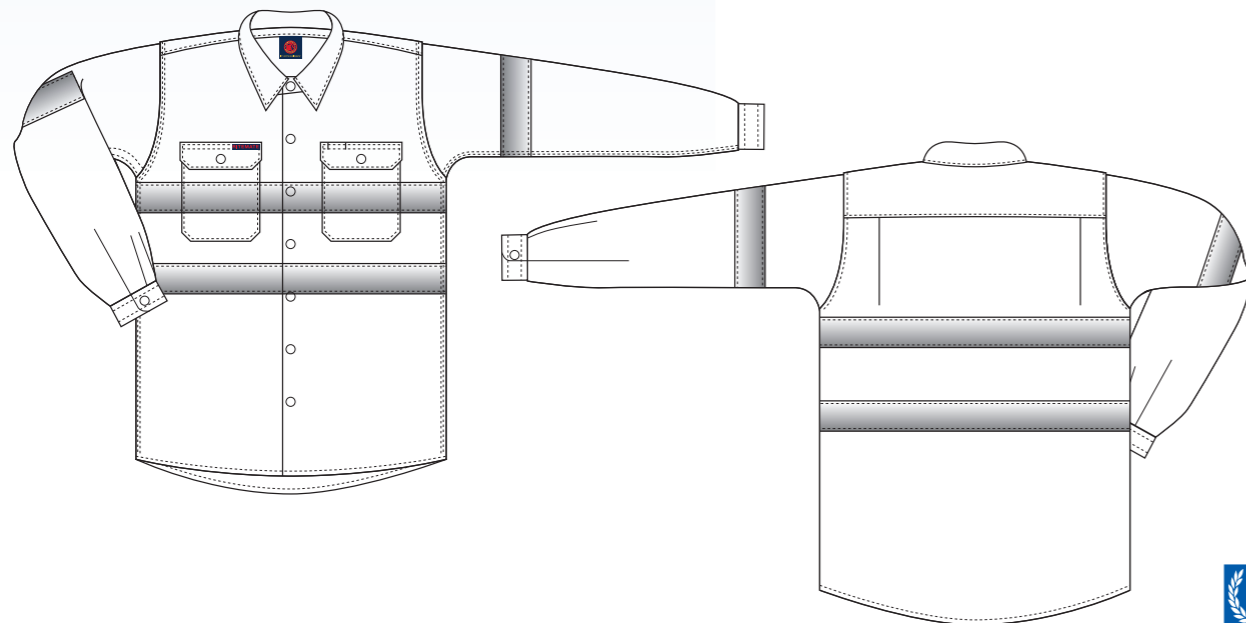
Regular weight - 190gsm

## QUALITY

Premium quality mercerized, double pre-shrunk, 100% cotton twill

## COLOURS

Yellow, Orange



# “IT’S GOTTA BE RITEMATE”



**“IT’S GOTTA BE RITEMATE”**

**RM1000**



**Open front long sleeve shirt**

**FEATURES**

- Superior garment assembly, twin needle stitching and bar tacks for extra strength
- UPF 50+ meets Australian standard AS/NZS 4399:1996
- Orange and yellow colour meets Australian standard AS/NZS 4602.1:2011 for high visibility day wear

**SIZE**

XS - 5XL

**WEIGHT**

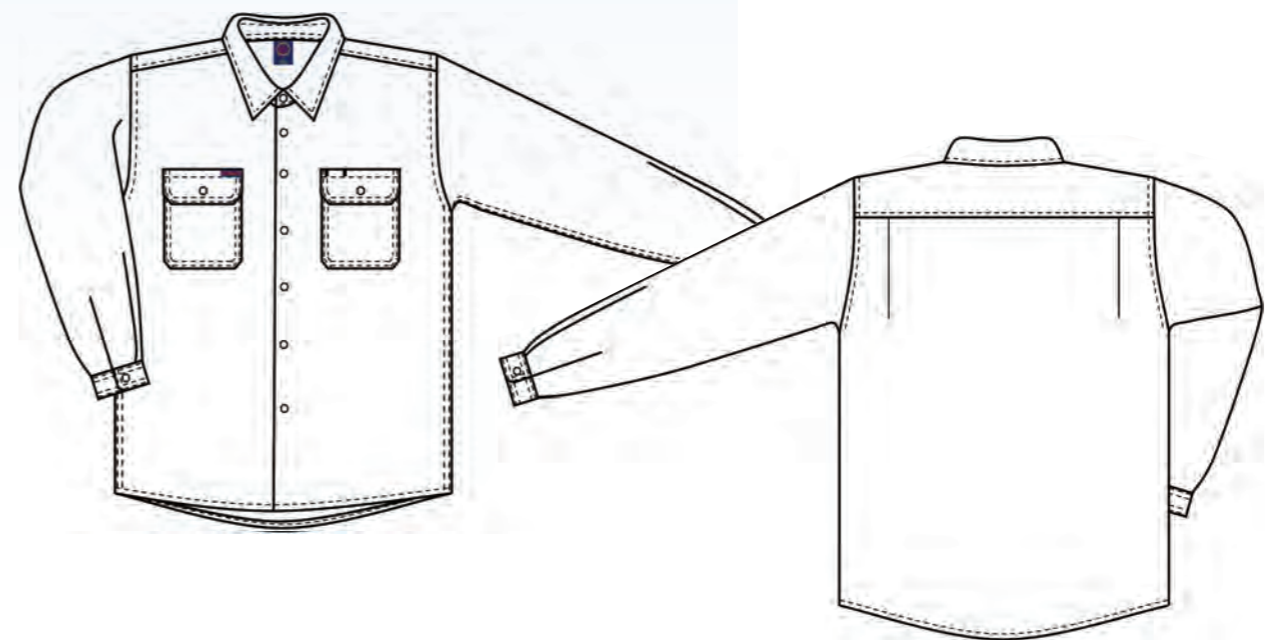
Regular weight - 190gsm

**QUALITY**

Premium quality mercerized, double pre-shrunk, 100% cotton twill

**COLOURS**

Bottle, Khaki, Orange, Navy, Yellow



# RM1000S

## Open front short sleeve shirt

### FEATURES

- Superior garment assembly, twin needle stitching and bar tacks for extra strength
- UPF 50+ meets Australian standard AS/NZS 4399:1996

### SIZE

XS - 5XL

### WEIGHT

Regular weight - 190gsm

### QUALITY

Premium quality mercerized, double pre-shrunk, 100% cotton twill

### COLOURS

Khaki, Navy, Bottle



# RM100CF

## Closed front long sleeve shirt

### FEATURES

- Superior garment assembly, twin needle stitching and bar tacks for extra strength
- UPF 50+ meets Australian standard AS/NZS 4399:1996
- Orange colour meets Australian standard AS/NZS 4602.1:2011 for high visibility

### SIZE

XS - 5XL

### WEIGHT

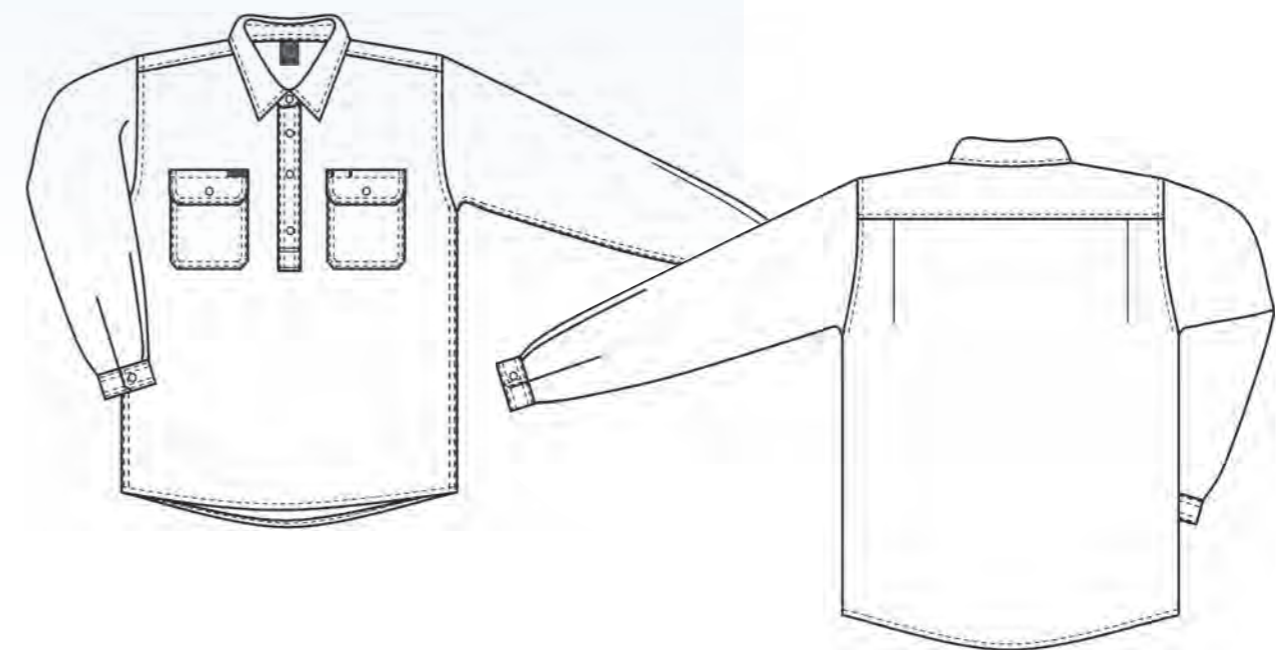
Regular weight - 190gsm

### QUALITY

Premium quality mercerized, double pre-shrunk, 100% cotton twill

### COLOURS

Khaki, Navy, Bottle, Orange



# RM100CFS

## Closed front short sleeve shirt

### FEATURES

- Superior garment assembly, twin needle stitching and bar tacks for extra strength
- UPF 50+ meets Australian standard AS/NZS 4399:1996

### SIZE

XS - 5XL

### WEIGHT

Regular weight - 190gsm

### QUALITY

Premium quality mercerized, double pre-shrunk, 100% cotton twill

### COLOURS

Khaki, Navy, Bottle



# RM208V2R

## Ladies 2 tone vented light weight open front long sleeve shirt with 3M 8910 reflective tape

### FEATURES

- Cotton mesh cooling vents located at underarm and shoulder positions
- Superior garment assembly, twin needle stitching and bar tacks for extra strength
- UPF 50+ meets Australian standard AS/NZS 4399:1996
- Meets Australian standard AS/NZS 1906.4:2010 & AS/NZS 4602.1:2011 for high visibility day/night wear
- Available in short sleeve upon request

### SIZE

6 - 20

### WEIGHT

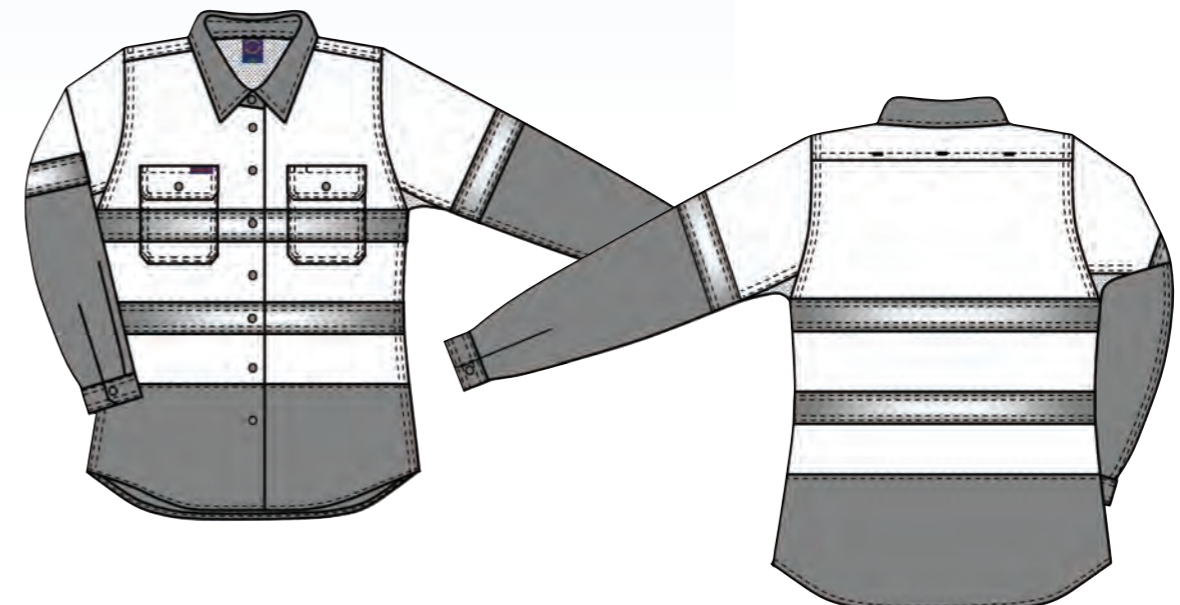
Light weight - 150gsm

### QUALITY

Premium quality mercerized, double pre-shrunk, 100% cotton twill

### COLOURS

Yellow/Navy, Orange/Navy



# RM208V3R

Ladies vented light weight open front long sleeve shirt with 3M 8910 reflective tape

### FEATURES

- Cotton mesh cooling vents located at underarm and shoulder positions
- Superior garment assembly, twin needle stitching and bar tacks for extra strength
- UPF 50+ meets Australian standard AS/NZS 4399:1996
- Meets Australian standard AS/NZS 1906.4:2010 & AS/NZS 4602.1:2011 for high visibility day/night wear
- Available in short sleeve upon request

### SIZE

6 - 20

### WEIGHT

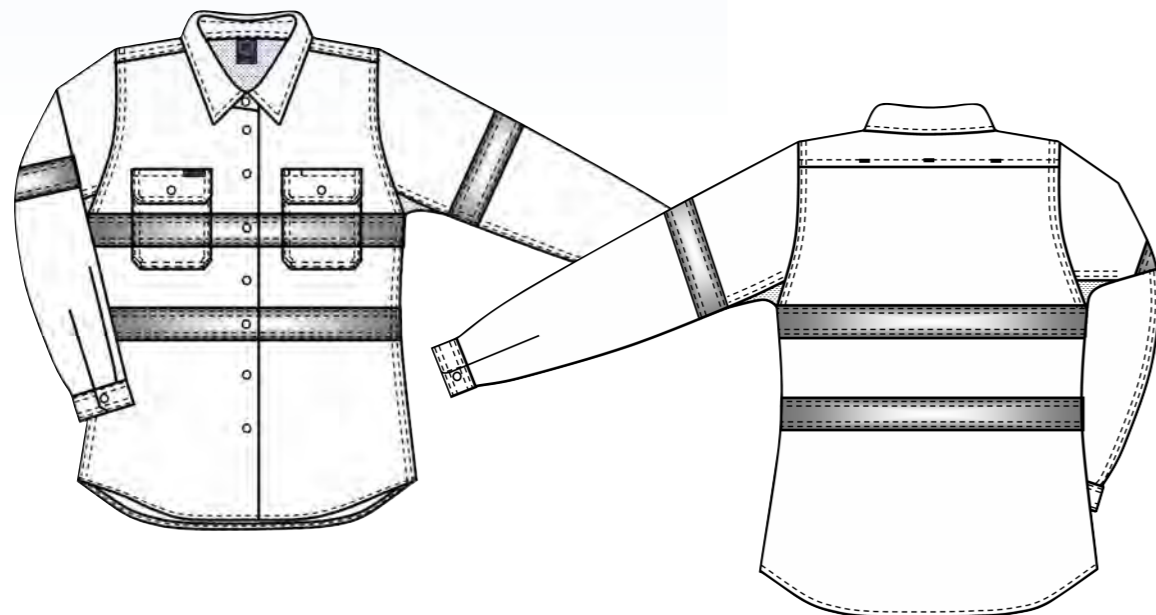
Light weight - 150gsm

### QUALITY

Premium quality mercerized, double pre-shrunk, 100% cotton twill

### COLOURS

Orange



# “IT’S GOTTA BE RITEMATE”



# RM107V2

2 tone vented light weight open front long sleeve shirt

**FEATURES**

- Cotton mesh cooling vents located at underarm and shoulder positions
- Superior garment assembly, twin needle stitching and bar tacks for extra strength
- UPF 50+ meets Australian standard AS/NZS 4399:1996
- Meets Australian standard AS/NZS 4602.1:2011 for high visibility day wear

**SIZE**

XS - 5XL

**WEIGHT**

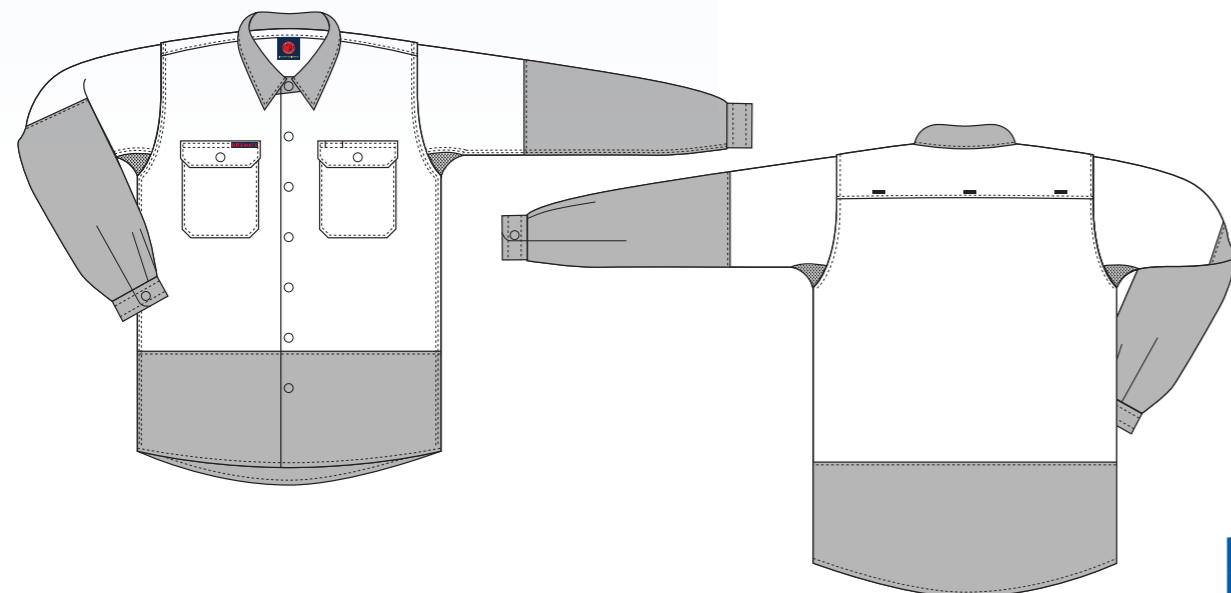
Light weight - 150gsm

**QUALITY**

Premium quality mercerized, double pre-shrunk, 100% cotton twill

**COLOURS**

Yellow/Navy, Orange/Navy



# RM107V2S

2 tone vented light weight open front short sleeve shirt

**FEATURES**

- Cotton mesh cooling vents located at underarm and shoulder positions
- Superior garment assembly, twin needle stitching and bar tacks for extra strength
- UPF 50+ meets Australian standard AS/NZS 4399:1996
- Meets Australian standard AS/NZS 4602.1:2011 for high visibility day wear

**SIZE**

XS - 5XL

**WEIGHT**

Light weight - 150gsm

**QUALITY**

Premium quality mercerized, double pre-shrunk, 100% cotton twill

**COLOURS**

Yellow/Navy, Orange/Navy



# RM107V2R

2 tone vented light weight open front long sleeve shirt with 3M 8910 reflective tape

### FEATURES

- Cotton mesh cooling vents located at underarm and shoulder positions
- Superior garment assembly, twin needle stitching and bar tacks for extra strength
- UPF 50+ meets Australian standard AS/NZS 4399:1996
- Meets Australian standard AS/NZS 1906.4:2010 & AS/NZS 4602.1:2011 for high visibility day/night wear

### SIZE

XS - 5XL

### WEIGHT

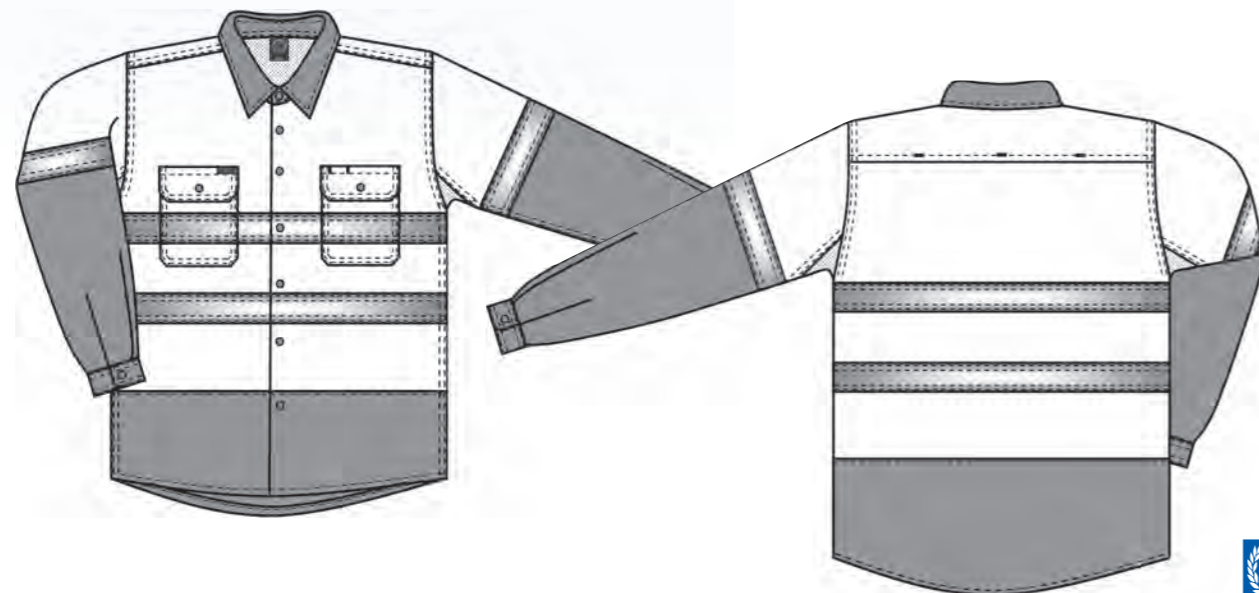
Light weight - 150gsm

### QUALITY

Premium quality mercerized, double pre-shrunk, 100% cotton twill

### COLOURS

Yellow/Navy, Orange/Navy



# RM107V2RS

2 tone vented light weight open front short sleeve shirt with 3M 8910 reflective tape

### FEATURES

- Cotton mesh cooling vents located at underarm and shoulder positions
- Superior garment assembly, twin needle stitching and bar tacks for extra strength
- UPF 50+ meets Australian standard AS/NZS 4399:1996
- Meets Australian standard AS/NZS 1906.4:2010 & AS/NZS 4602.1:2011 for high visibility day/night wear

### SIZE

XS - 5XL

### WEIGHT

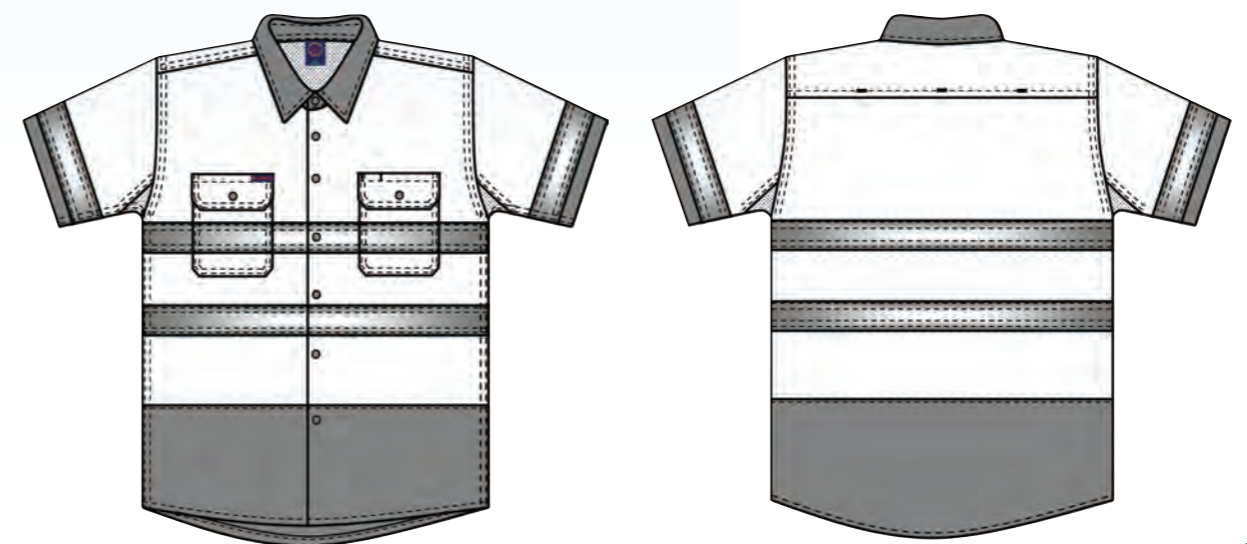
Light weight - 150gsm

### QUALITY

Premium quality mercerized, double pre-shrunk, 100% cotton twill

### COLOURS

Yellow/Navy, Orange/Navy



# RM108V3

## Vented light weight open front long sleeve shirt

### FEATURES

- Cotton mesh cooling vents located at underarm and shoulder positions
- Superior garment assembly, twin needle stitching and bar tacks for extra strength
- UPF 50+ meets Australian standard AS/NZS 4399:1996
- Orange colour meets Australian standard AS/NZS 1906.4:2010 & AS/NZS 4602.1:2011 for high visibility day wear
- Available in short sleeve upon request

### SIZE

XS - 5XL

### WEIGHT

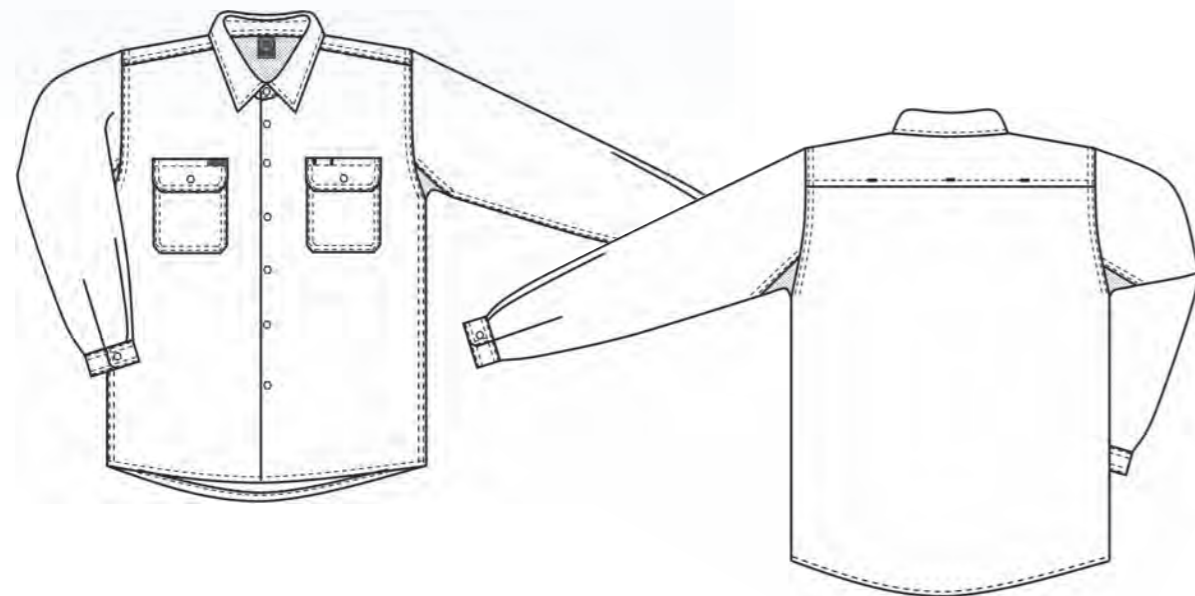
Light weight - 150gsm

### QUALITY

Premium quality mercerized, double pre-shrunk, 100% cotton twill

### COLOURS

Khaki, Navy, Orange



# RM108V3R

## Vented light weight open front long sleeve shirt with 3M 8910 reflective tape

### FEATURES

- Cotton mesh cooling vents located at underarm and shoulder positions
- Superior garment assembly, twin needle stitching and bar tacks for extra strength
- UPF 50+ meets Australian standard AS/NZS 4399:1996
- Meets Australian standard AS/NZS 1906.4:2010 & AS/NZS 4602.1:2011 for high visibility day/night wear
- Available in short sleeve upon request

### SIZE

XS - 5XL

### WEIGHT

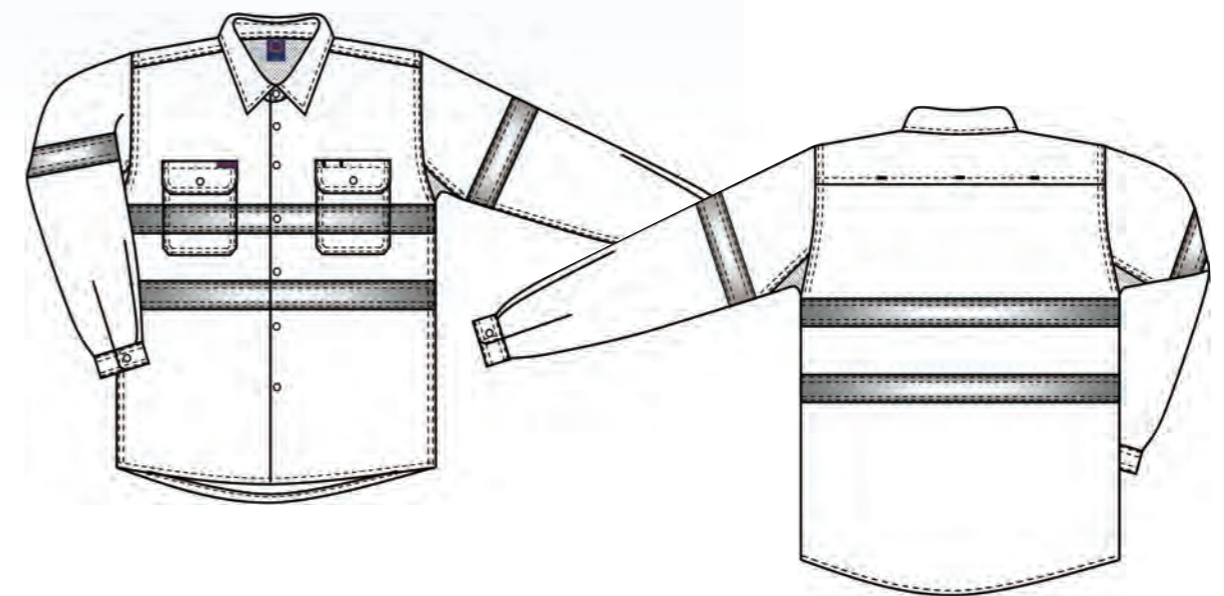
Light weight - 150gsm

### QUALITY

Premium quality mercerized, double pre-shrunk, 100% cotton twill

### COLOURS

Orange



# RM400CF

## Children's Pilbara closed front long sleeve shirt

### FEATURES

- Superior garment assembly, twin needle stitching and bar tacks for extra strength
- UPF 50+ meets Australian standard AS/NZS 4399:1996
- Designed for comfort

### SIZE

0 - 14

### WEIGHT

Light weight - 150gsm

### QUALITY

Premium quality mercerized, double pre-shrunk, 100% cotton twill

### COLOURS

Cobalt Blue, Stone, Hot Pink, Emerald, Purple, Red



# RM4050R

## Children's 2 tone open front long sleeve shirt with reflective tape

### FEATURES

- Superior garment assembly, twin needle stitching and bar tacks for extra strength
- UPF 50+ meets Australian standard AS/NZS 4399:1996

### SIZE

0 - 14

### WEIGHT

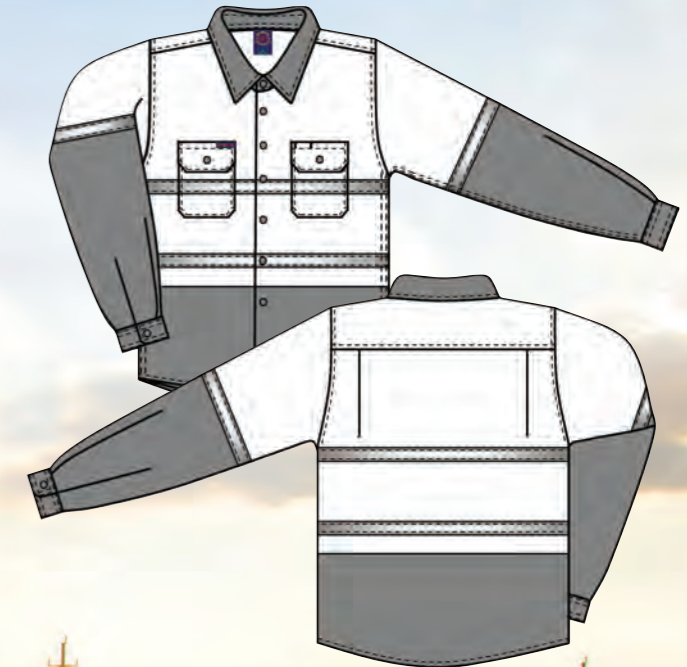
Light weight - 150gsm

### QUALITY

Premium quality mercerized, double pre-shrunk, 100% cotton twill

### COLOURS

Yellow/Navy, Orange/Navy, Pink/Navy, Blue/Navy



# RM200CF

## Pilbara men's closed front long sleeve shirt

### FEATURES

- Superior garment assembly, twin needle stitching and bar tacks for extra strength
- UPF 50+ meets Australian standard AS/NZS 4399:1996
- Designed for comfort

### SIZE

XS - 5XL

### WEIGHT

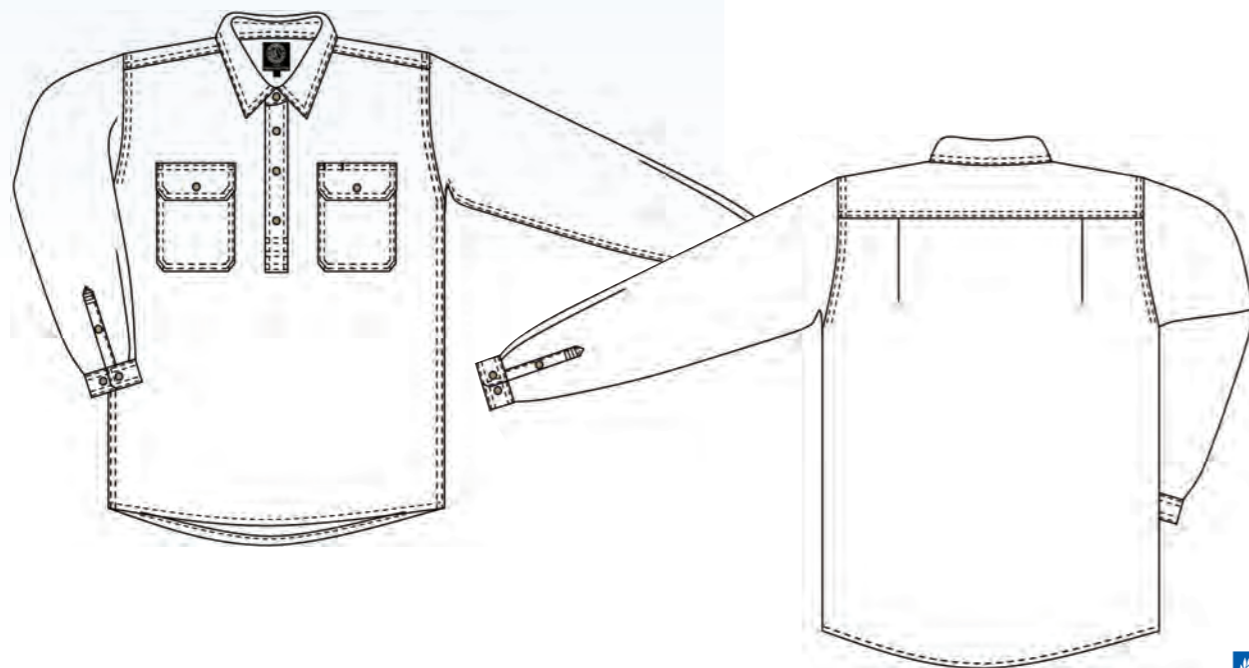
Light weight - 150gsm

### QUALITY

Premium quality mercerized, double pre-shrunk, 100% cotton twill

### COLOURS

Bottle Green, Cobalt Blue, Red, Stone, Light Blue, Black, Emerald



# "IT'S GOTTA BE RITEMATE"



“IT’S GOTTA BE RITEMATE”

RM300CF



**Pilbara ladies closed front long sleeve shirt**

**FEATURES**

- Superior garment assembly, twin needle stitching and bar tacks for extra strength
- UPF 50+ meets Australian standard AS/NZS 4399:1996
- Designed for comfort

**SIZE**

6 - 20

**WEIGHT**

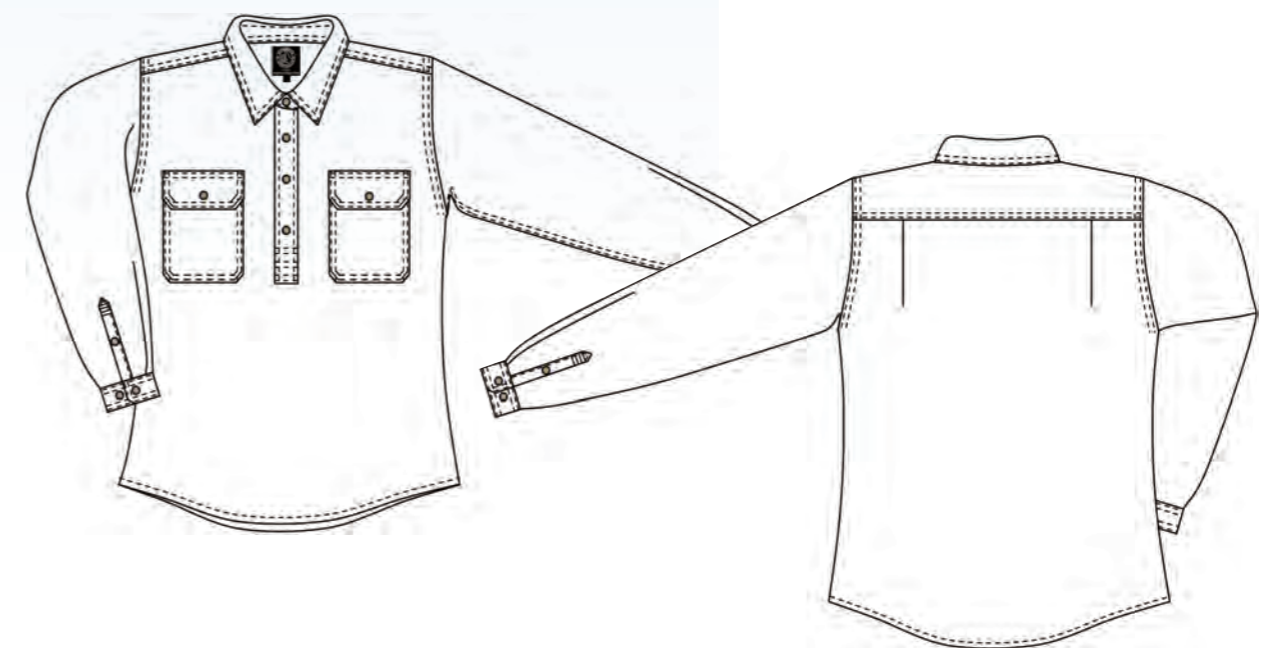
Light weight - 150gsm

**QUALITY**

Premium quality mercerized, double pre-shrunk, 100% cotton twill with soft hand feel

**COLOURS**

Bottle Green, Cobalt Blue, Purple, Hot Pink, Stone, Red, Emerald



# RM500BT

## Pilbara men's open front long sleeve shirt

### FEATURES

- Superior garment assembly, twin needle stitching and bar tacks for extra strength
- UPF 50+ meets Australian standard AS/NZS 4399:1996
- Designed for comfort

### SIZE

XS - 5XL

### WEIGHT

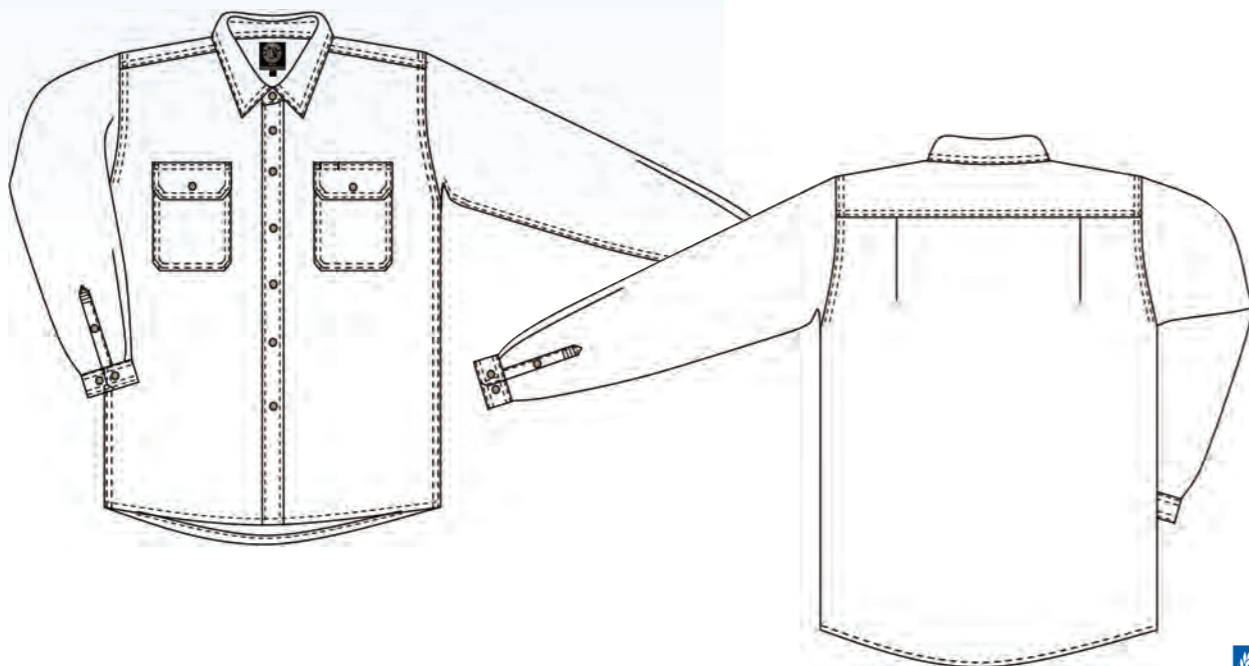
Light weight - 150gsm

### QUALITY

Premium quality mercerized, double pre-shrunk, 100% cotton twill

### COLOURS

Emerald, Cobalt Blue, Red, Stone, Light Blue, Black



# “IT’S GOTTA BE RITEMATE”



# RM200CFS

## Pilbara men's closed front short sleeve shirt

### FEATURES

- Superior garment assembly, twin needle stitching and bar tacks for extra strength
- UPF 50+ meets Australian standard AS/NZS 4399:1996
- Designed for comfort

### SIZE

XS - 5XL

### WEIGHT

Light weight - 150gsm

### QUALITY

Premium quality mercerized, double pre-shrunk, 100% cotton twill

### COLOURS

Cobalt Blue, Red, Stone



# RM500BTS

## Pilbara men's open front short sleeve shirt

### FEATURES

- Superior garment assembly, twin needle stitching and bar tacks for extra strength
- UPF 50+ meets Australian standard AS/NZS 4399:1996
- Designed for comfort

### SIZE

XS - 5XL

### WEIGHT

Light weight - 150gsm

### QUALITY

Premium quality mercerized, double pre-shrunk, 100% cotton twill

### COLOURS

Cobalt Blue, Red, Stone



**“IT’S GOTTA BE RITEMATE”**



## RM123FCF

Closed front flannelette shirt

**FEATURES**

- UPF 50+ meets Australian standard AS/NZS 4399:1996

**SIZE**

XS - 5XL

**WEIGHT**

Regular weight - 160gsm

**QUALITY**

Premium Quality, Preshrunk 100% Cotton Flannelette

**COLOURS**

Available in assorted Colours

## RM123QS

Open front quilted flannelette shirt

**FEATURES**

- Reinforced riveted metal clips
- UPF 50+ meets Australian standard AS/NZS 4399:1996

**SIZE**

XS - 5XL

**WEIGHT**

Regular weight - 160gsm

**QUALITY**

Premium Quality, Preshrunk 100% Cotton Flannelette

**COLOURS**

Available in assorted Colours



## RM123V

Zip front quilted flannelette vest

**FEATURES**

- UPF 50+ meets Australian standard AS/NZS 4399:1996

**SIZE**

XS - 5XL

**WEIGHT**

Regular weight - 160gsm

**QUALITY**

Premium Quality, Preshrunk 100% Cotton Flannelette

**COLOURS**

Available in assorted Colours

## RM123FOF

Open front flannelette shirt

**FEATURES**

- UPF 50+ meets Australian standard AS/NZS 4399:1996

**SIZE**

XS - 10XL

**WEIGHT**

Regular weight - 160gsm

**QUALITY**

Premium Quality, Preshrunk 100% Cotton Flannelette

**COLOURS**

Available in assorted Colours

# RM1002

## Belt loop drill trouser

### FEATURES

- Superior garment assembly, twin needle stitching and bar tacks for extra strength
- UPF 50+ meets Australian standard AS/NZS 4399:1996
- Meets Australian standard AS/NZS 1906.4.2010 for high visibility night wear
- Quality YKK zippers Navy

### SIZE

72R-112R, 87S-127S, 79L-94L

### WEIGHT

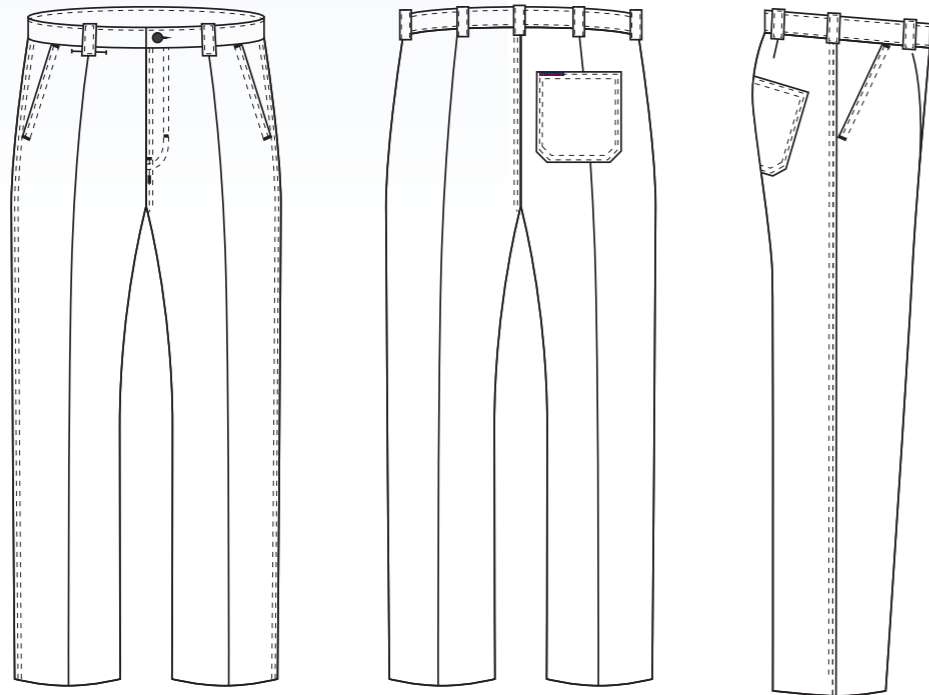
Regular weight - 311gsm

### QUALITY

Premium quality mercerized, double pre-shrunk, 100% cotton drill

### COLOURS

Navy, Khaki, Bottle



# “IT’S GOTTA BE RITEMATE”



# RM1002R

**Belt loop drill trouser with 3M 8910 reflective tape**

**FEATURES**

- Superior garment assembly, twin needle stitching and bar tacks for extra strength
- UPF 50+ meets Australian standard AS/NZS 4399:1996
- Meets Australian standard AS/NZS 1906.4.2010 for high visibility night wear
- Quality YKK zippers Navy

**SIZE**

72R-112R, 87S-127S, 79L-94L

**WEIGHT**

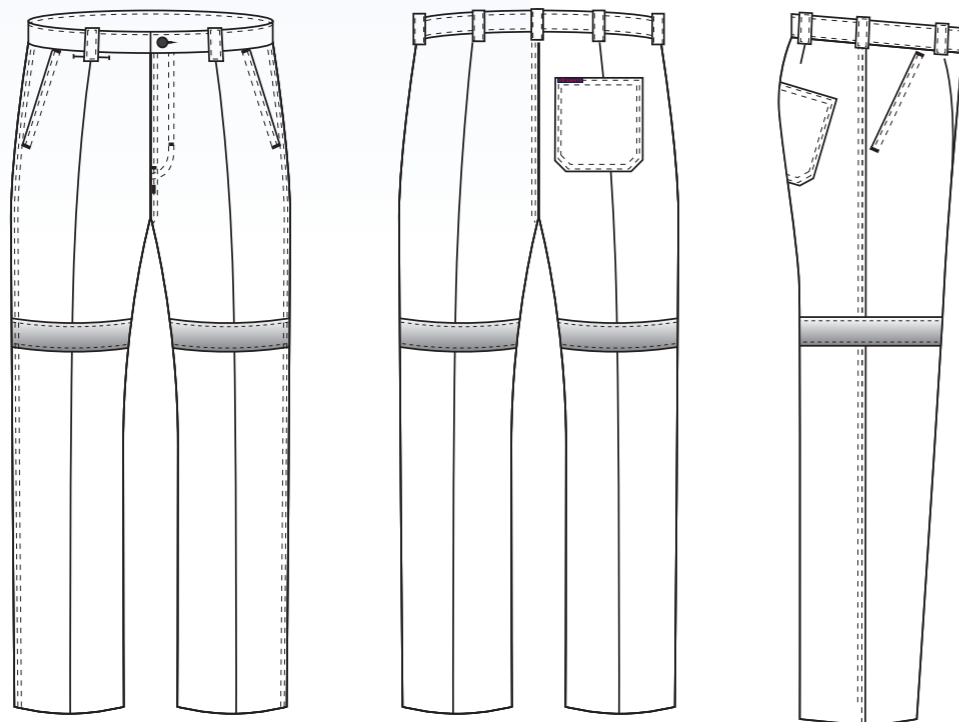
Regular weight - 311gsm

**QUALITY**

Premium quality mercerized, double pre-shrunk, 100% cotton drill

**COLOURS**

Navy



# RM1004R

**Cargo trouser with 3M 8910 reflective tape**

**FEATURES**

- Superior garment assembly, twin needle stitching and bar tacks for extra strength
- UPF 50+ meets Australian standard AS/NZS 4399:1996
- Meets Australian standard AS/NZS 1906.4.2010 for high visibility night wear
- Quality YKK zippers Navy

**SIZE**

72R-112R, 87S-127S, 79L-94L

**WEIGHT**

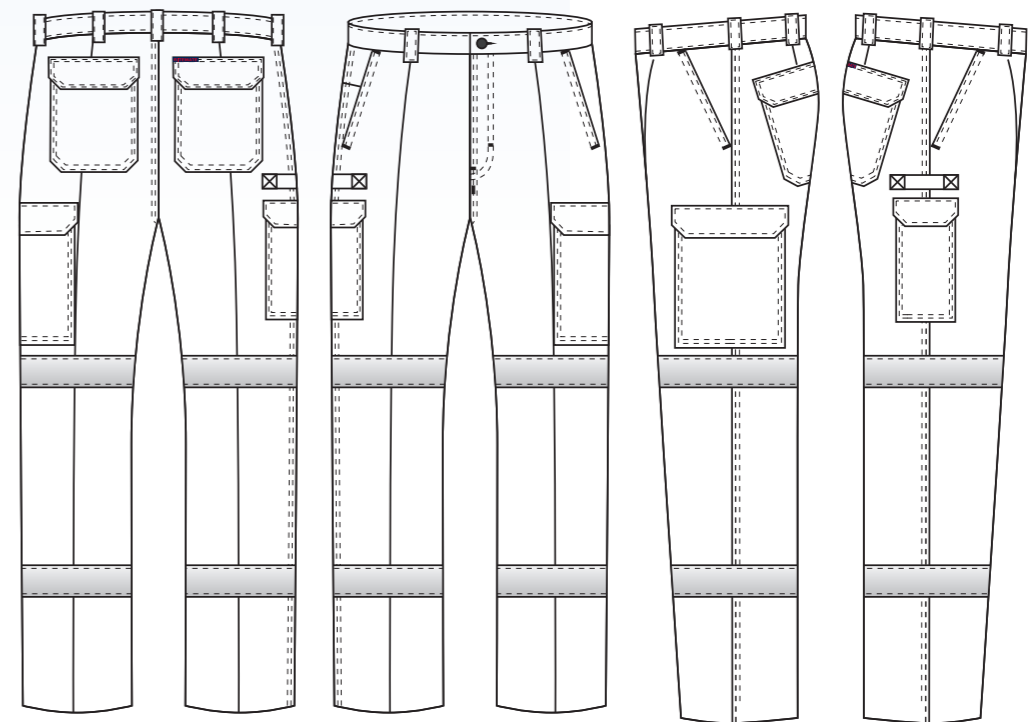
Regular weight - 311gsm

**QUALITY**

Premium quality mercerized, double pre-shrunk, 100% cotton drill

**COLOURS**

Navy



“IT’S GOTTA BE RITEMATE”

## RM1004



### Cargo trouser

#### FEATURES

- Superior garment assembly, twin needle stitching and bar tacks for extra strength
- UPF 50+ meets Australian standard AS/NZS 4399:1996
- Quality YKK zippers Navy

#### SIZE

72R-112R, 87S-127S, 79L-94L

#### WEIGHT

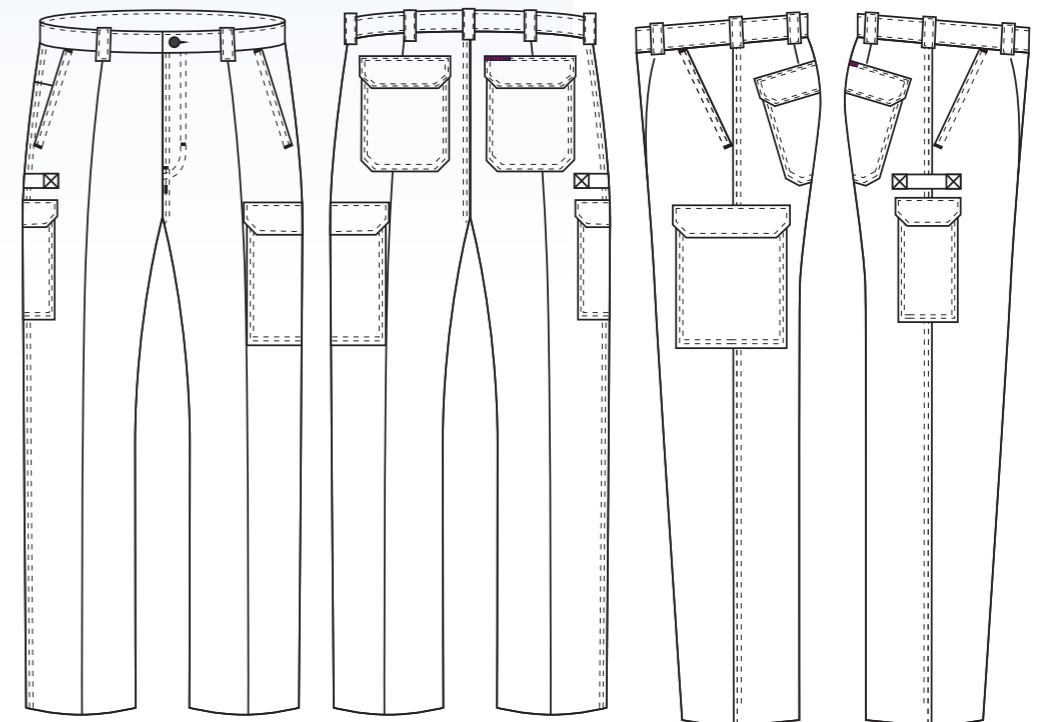
Regular weight - 311gsm

#### QUALITY

Premium quality mercerized, double pre-shrunk, 100% cotton drill

#### COLOURS

Black, Bottle, Khaki, Navy



# RM1002S

## Belt loop and side tab combo short

### FEATURES

- Superior garment assembly, twin needle stitching and bar tacks for extra strength
- UPF 50+ meets Australian standard AS/NZS 4399:1996
- Quality YKK zippers Navy

### SIZE

72 - 127

### WEIGHT

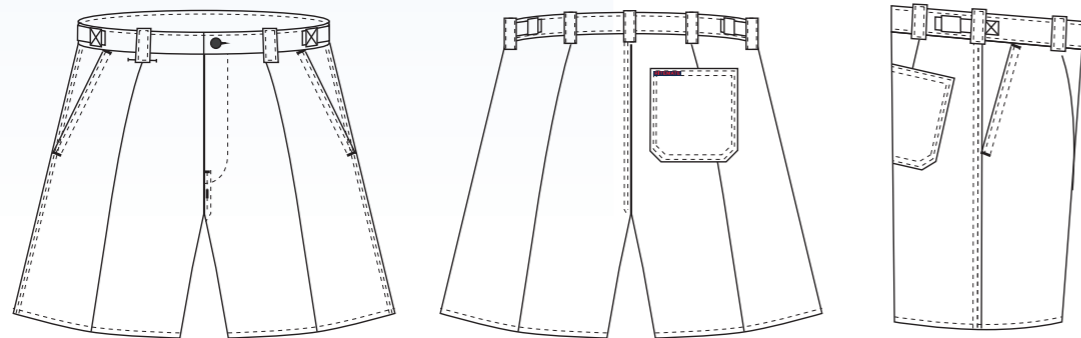
Regular weight - 311gsm

### QUALITY

Premium quality mercerized, double pre-shrunk, 100% cotton drill

### COLOURS

Bottle, Khaki, Navy



# RM1004S

## Cargo short

### FEATURES

- Superior garment assembly, twin needle stitching and bar tacks for extra strength
- UPF 50+ meets Australian standard AS/NZS 4399:1996
- Quality YKK zippers Navy

### SIZE

72 - 127

### WEIGHT

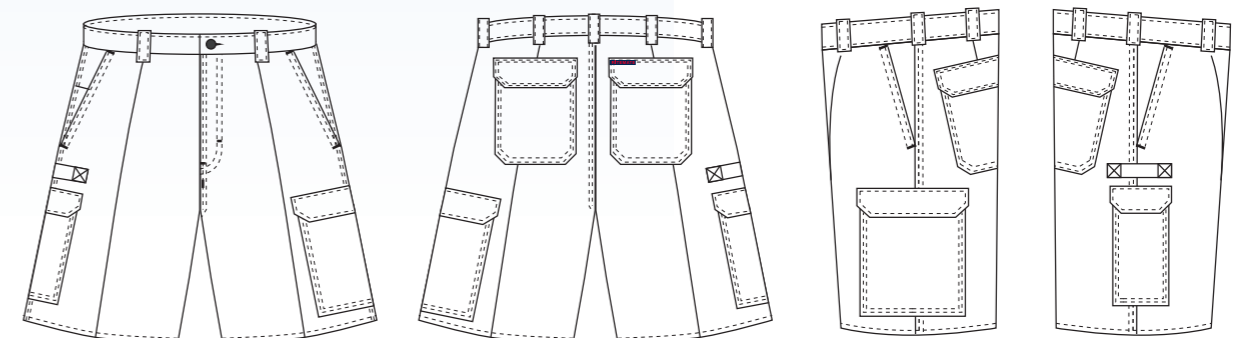
Regular weight - 311gsm

### QUALITY

Premium quality mercerized, double pre-shrunk, 100% cotton drill

### COLOURS

Black, Bottle, Khaki, Navy



# RM4040

## Light weight 4040 cargo short – unisex short

### FEATURES

- Soft handle garment wash
- Streamline inverted cargo pockets
- Superior garment assembly, twin needle stitching and bar tacks for extra strength
- UPF 50+ meets Australian standard AS/NZS 4399:1996
- Quality YKK zippers

### SIZE

Men's sizes 72 - 127  
Ladies sizes 8 - 24

### WEIGHT

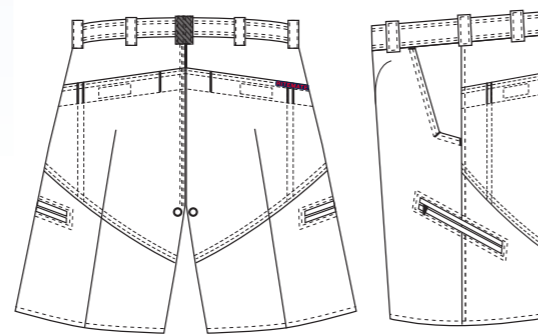
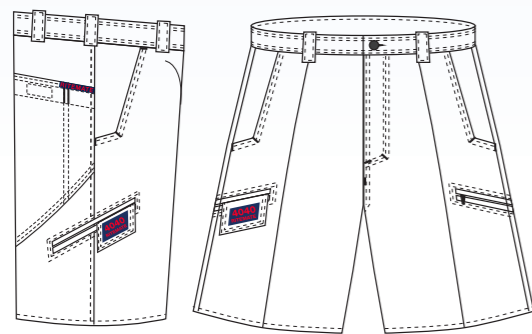
Light weight - 190gsm

### QUALITY

Premium quality mercerized, double pre-shrunk, 100% cotton drill

### COLOURS

Black, Navy, Khaki



# RM8080

## Light weight 8080 cargo trouser – unisex trouser

### FEATURES

- Soft handle garment wash
- Streamline inverted cargo pockets
- Superior garment assembly, twin needle stitching and bar tacks for extra strength
- UPF 50+ meets Australian standard AS/NZS 4399:1996
- Quality YKK zippers

### SIZE

Men's sizes 72R-112R, 87S-127S, 79L-94L  
Ladies sizes 8 - 24

### WEIGHT

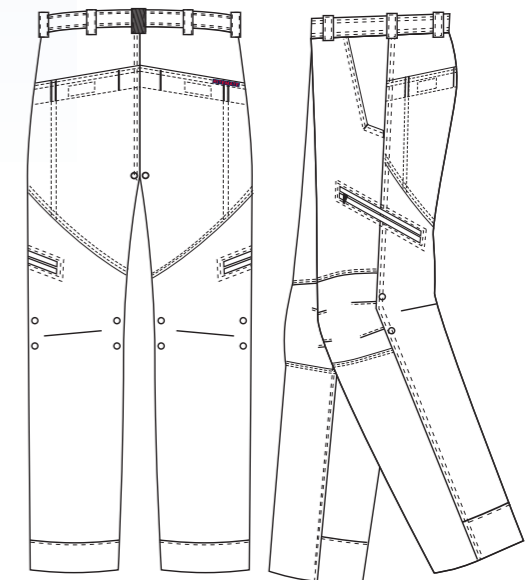
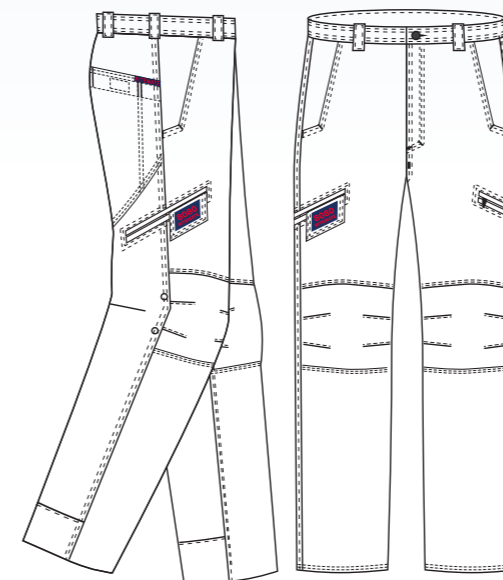
Light weight - 190gsm

### QUALITY

Premium quality mercerized, double pre-shrunk, 100% cotton drill

### COLOURS

Black, Navy, Khaki



# RM33EWLS

## Elastic waist long leg short

### FEATURES

- Superior garment assembly, twin needle stitching and bar tacks for extra strength
- UPF 50+ meets Australian standard AS/NZS 4399:1996
- Quality YKK zippers Navy

### SIZE

72 - 127

### WEIGHT

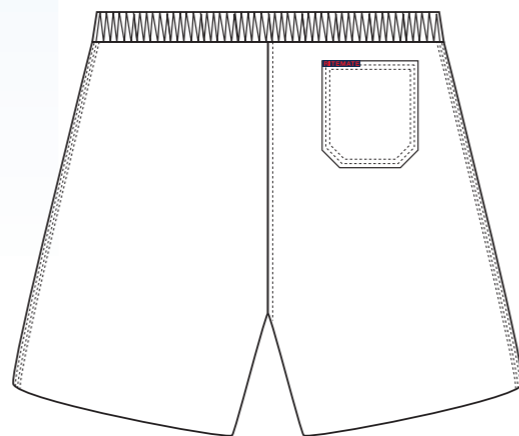
Regular weight - 311gsm

### QUALITY

Premium quality mercerized, double pre-shrunk, 100% cotton drill

### COLOURS

Black, Navy



# “IT’S GOTTA BE RITEMATE”



# RM301EWS

## Elastic waist rugby short

### FEATURES

- Superior garment assembly, twin needle stitching and bar tacks for extra strength
- UPF 50+ meets Australian standard AS/NZS 4399:1996

### SIZE

72 - 127

### WEIGHT

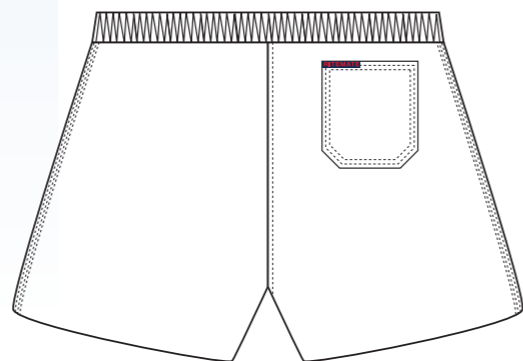
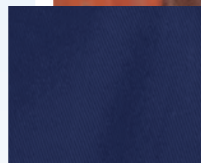
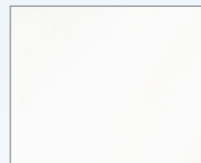
Regular weight - 311gsm

### QUALITY

Premium quality mercerized, double pre-shrunk, 100% cotton drill

### COLOURS

Bottle, Black, White, Navy



# RM1007

## Mid weight cargo trouser

### FEATURES

- Heel Protection, comfort waist band, heavy duty double pocket lining, engineered fit, air vented, extra pockets and utility loops.
- Superior garment assembly, twin needle stitching and bar tacks for extra strength
- UPF 50+ meets Australian standard AS/NZS 4399:1996
- Quality YKK zippers

### SIZE

72R-112R, 87S-127S, 79L-94L

### WEIGHT

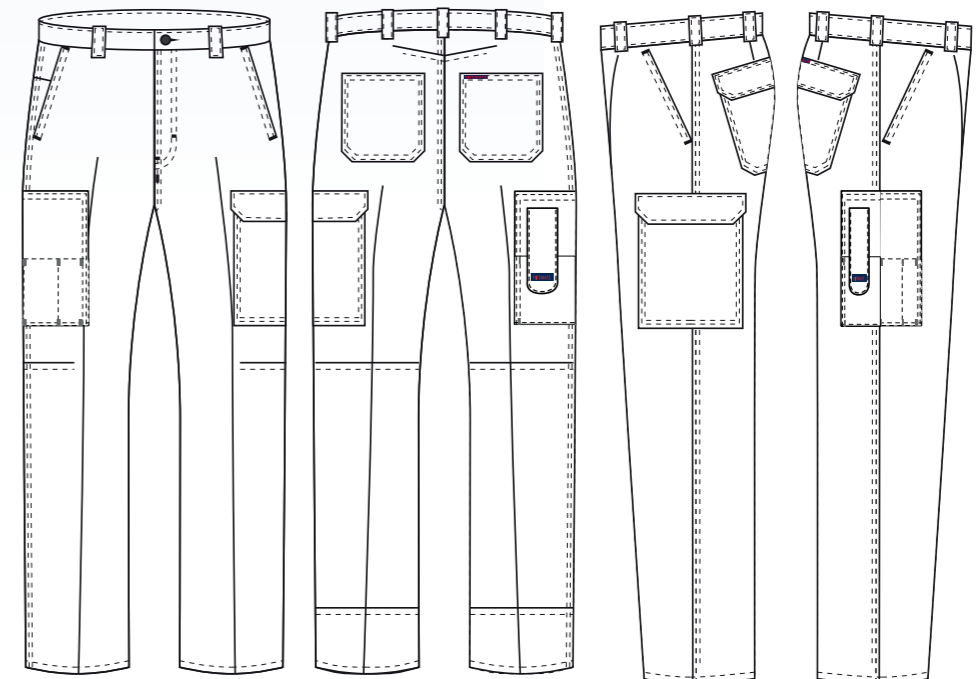
Mid weight - 270gsm

### QUALITY

Premium quality mercerized, double pre-shrunk, 100% cotton drill

### COLOURS

Navy



# RM1008M

## Coverall

### FEATURES

- Superior garment assembly, twin needle stitching and bar tacks for extra strength
- UPF 50+ meets Australian standard AS/NZS 4399:1996
- Quality YKK zippers

### SIZE

72R-107R, 92S-127S

### WEIGHT

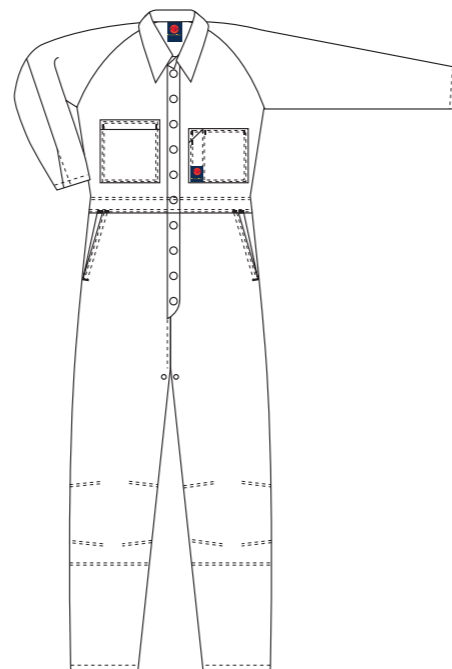
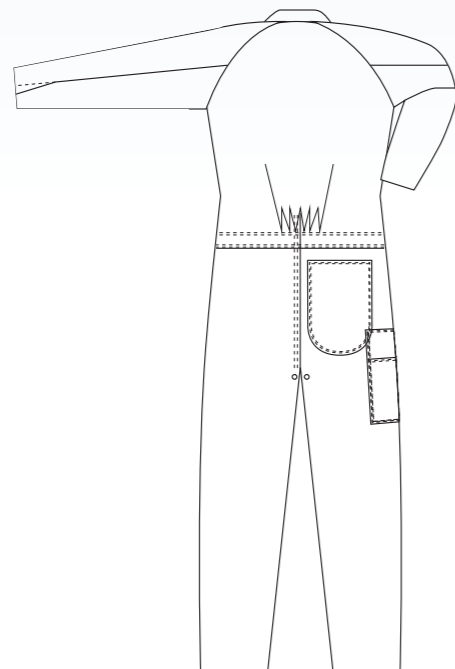
Mid weight - 270gsm

### QUALITY

Premium quality mercerized, double pre-shrunk, 100% cotton drill

### COLOURS

Navy



# RM908CR

## 2 tone coverall with 3M 8910 reflective tape

### FEATURES

- Superior garment assembly, twin needle stitching and bar tacks for extra strength
- Meets Australian standard AS/NZS 1906.4:2010 & AS/NZS 4602.1:2011 for high visibility day/night wear
- UPF 50+ meets Australian standard AS/NZS 4399:1996
- Quality riveted press studs
- Quality YKK zippers

### SIZE

77R-112R, 87S-127S

### WEIGHT

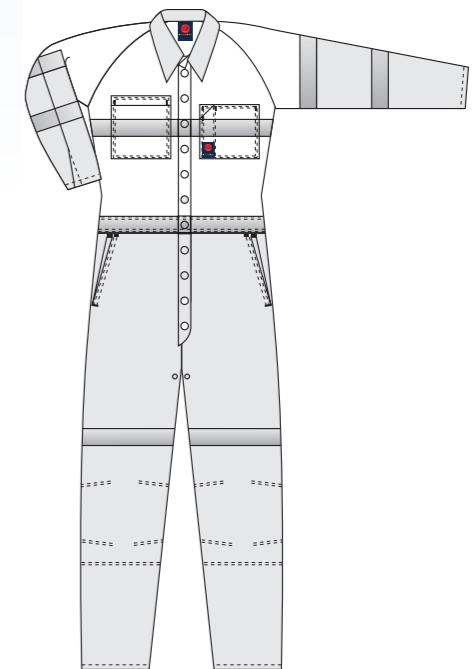
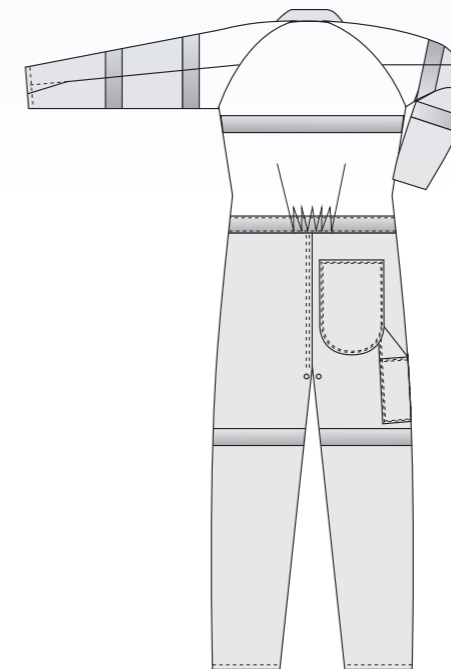
Regular weight - 311gsm

### QUALITY

Premium quality mercerized, double pre-shrunk, 100% cotton drill

### COLOURS

Yellow/Navy, Orange/Navy



# RM909AR

2 tone action back overall with 3M 8910 reflective tape

### FEATURES

- Superior garment assembly, twin needle stitching and bar tacks for extra strength
- Quality riveted press studs
- Quality YKK zippers
- UPF 50+ meets Australian standard AS/NZS 4399:1996

### SIZE

77R-112R, 87S-127S

### WEIGHT

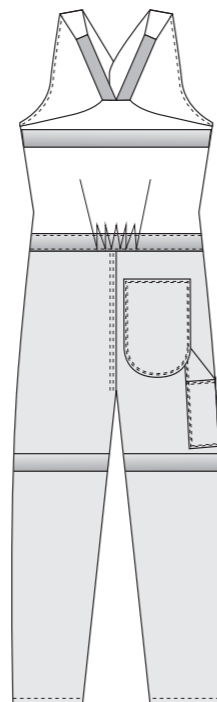
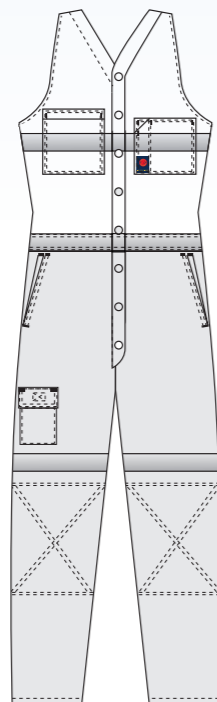
Regular weight - 311gsm

### QUALITY

Premium quality mercerized, double pre-shrunk, 100% cotton drill

### COLOURS

Orange/Navy, Yellow/Navy



# RM411CP

CORDURA® cargo trouser

### FEATURES

- Strategically position anti-abrasive CORDURA® panels for extra strength and dura-bility
- Superior garment assembly, triple needle stitching and contrast bar tacks for extra strength
- UPF 50+ meets Australian standard AS/NZS 4399:1996
- Quality YKK zippers

### SIZE

72R-112R, 87S-127S, 79L-94L

### WEIGHT

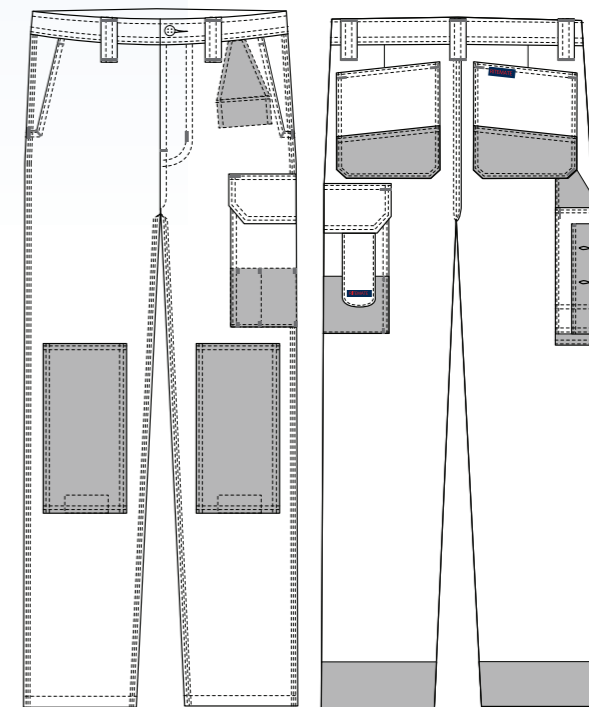
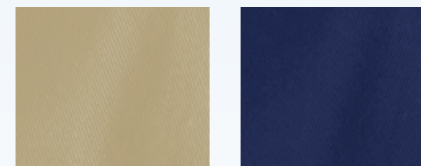
Regular weight - 345gsm

### QUALITY

Premium quality silicon washed pre-shrunk, 100% cotton duck weave

### COLOURS

Khaki, Navy



### What is CORDURA® fabric?

CORDURA® fabric is what many of the most respected brands, retailers and military organisations around the world use when they need to make a product that is durable, versatile and reliable. Constructed using high tenacity fibre technology, weight for weight CORDURA® fabric is exceptionally durable. The fact is, no matter the application CORDURA® fabric is "Best in Class". More importantly, CORDURA® fabric is stringently tested before it can earn the CORDURA® brand name. CORDURA® is available in a wide range of weights, constructions and textures. All in all, CORDURA® fabrics make strong, long-lasting products even tougher in several categories from outdoor gear and military uniforms to WORKWEAR.



# RM411CS

## CORDURA® cargo short

### FEATURES

- Strategically position anti-abrasive CORDURA® panels for extra strength and durability
- Superior garment assembly, triple needle stitching and contrast bar tacks for extra strength
- UPF 50+ meets Australian standard AS/NZS 4399:1996
- Quality YKK zippers

### SIZE

77 - 127

### WEIGHT

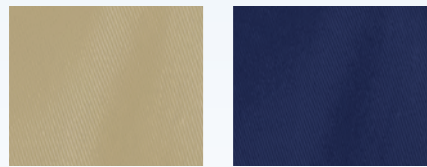
Regular weight - 345gsm

### QUALITY

Premium quality silicon washed pre-shrunk, 100% cotton duck weave

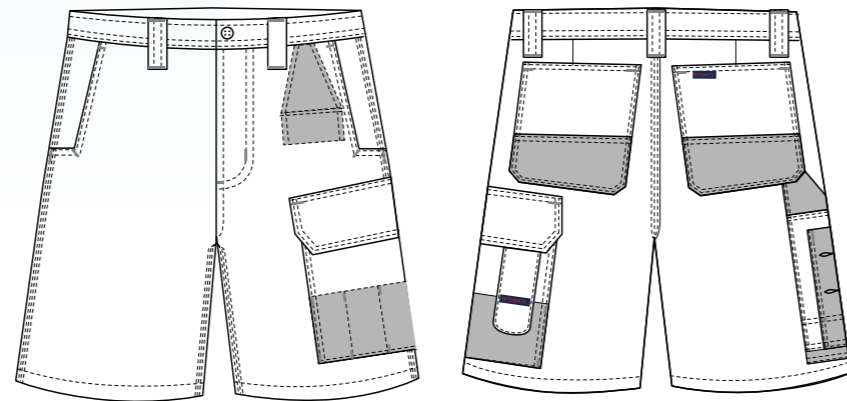
### COLOURS

Khaki, Navy



### What is CORDURA® fabric?

CORDURA® fabric is what many of the most respected brands, retailers and military organisations around the world use when they need to make a product that is durable, versatile and reliable. Constructed using high tenacity fibre technology, weight for weight CORDURA® fabric is exceptionally durable. The fact is, no matter the application CORDURA® fabric is "Best in Class". More importantly, CORDURA® fabric is stringently tested before it can earn the CORDURA® brand name. CORDURA® is available in a wide range of weights, constructions and textures. All in all, CORDURA® fabrics make strong, long-lasting products even tougher in several categories from outdoor gear and military uniforms to WORKWEAR.



# "IT'S GOTTA BE RITEMATE"



# RM106DJ

## Denim jeans

### FEATURES

- Superior garment assembly, twin needle stitching, rivets and bar tacks for extra strength
- UPF 50+ meets Australian standard AS/NZS 4399:1996
- Quality YKK Zippers

### SIZE

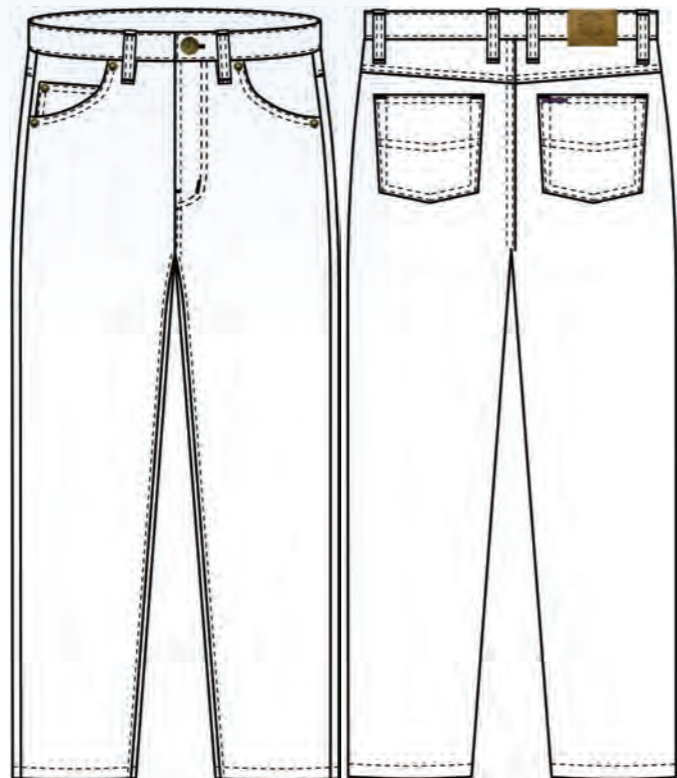
72R-112R, 87S-127S, 79L-94L

### WEIGHT

14.5 OZ stone wash denim

### COLOURS

Blue



# RM106DJR

## Denim jeans with 3M 8910 reflective tape

### FEATURES

- Superior garment assembly, twin needle stitching, rivets and bar tacks for extra strength
- UPF 50+ meets Australian standard AS/NZS 4399:1996
- Meets Australian standard AS/NZS 1906.4.2010 for high visibility night wear
- Quality YKK Zippers

### SIZE

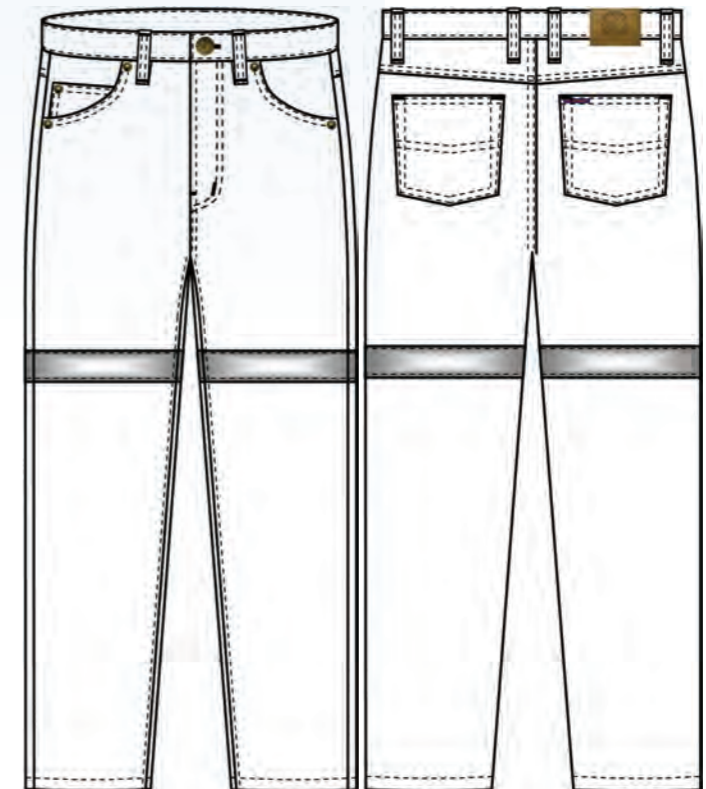
72R-112R, 87S-127S, 79L-94L

### WEIGHT

14.5 OZ stone wash denim

### COLOURS

Blue



# RM110SD

## Stretch denim jeans

### FEATURES

- Superior garment assembly, twin needle stitching, rivets and bar tacks for extra strength
- UPF 50+ meets Australian standard AS/NZS 4399:1996
- Quality YKK Zippers

### SIZE

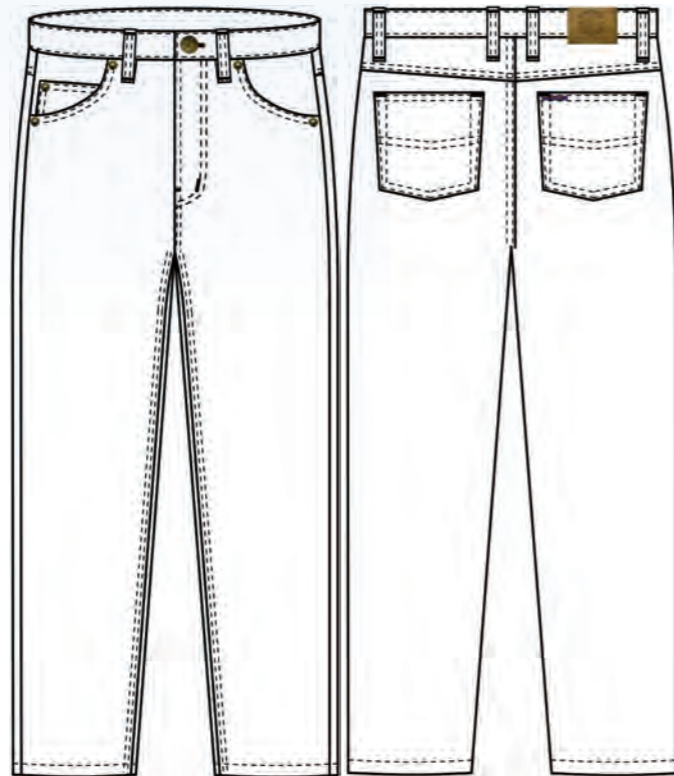
72R-112R, 87S-127S, 79L-94L

### WEIGHT

13.75 OZ stone wash denim

### COLOURS

Blue



# RM110SDR

## Stretch denim jeans with 3M 8910 reflective tape

### FEATURES

- Superior garment assembly, twin needle stitching and bar tacks for extra strength
- UPF 50+ meets Australian standard AS/NZS 4399:1996
- Quality YKK zippers
- Meets Australian standard AS/NZS 1906.4.2010 for high visibility night wear

### SIZE

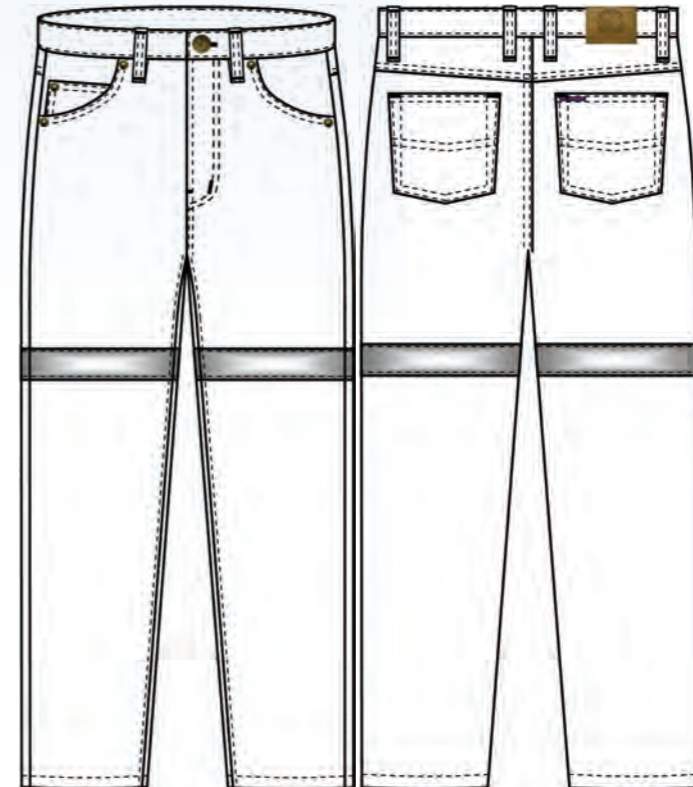
72R-112R, 87S-127S, 79L-94L

### WEIGHT

13.75 OZ stone wash denim

### COLOURS

Blue



**“IT’S GOTTA BE RITEMATE”**

**RM112TSD**



**Denim Trucker Short (Jean Short)**

**FEATURES**

- Superior garment assembly, twin needle stitching, rivets and bar tacks for extra strength
- Stretch denim for easy wear and comfortable fit
- Quality YKK Zippers

**SIZE**

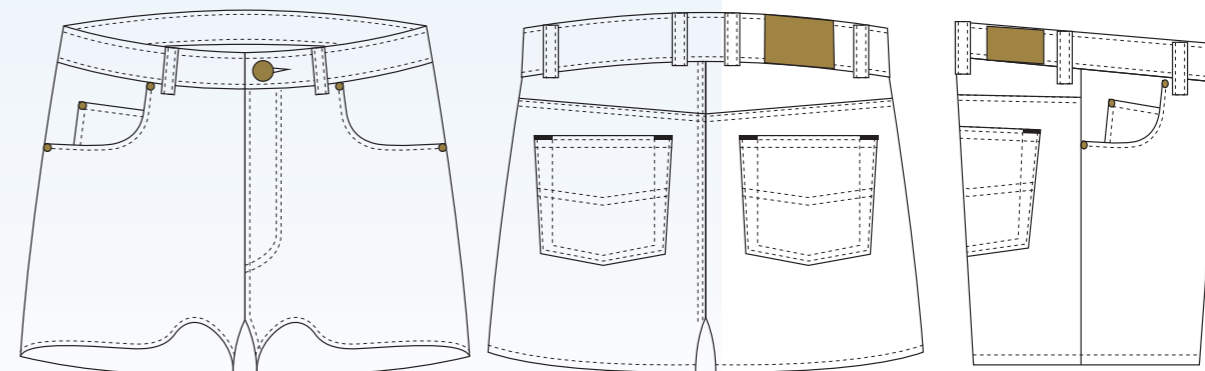
77 - 127

**WEIGHT**

13.75 OZ stone wash stretch denim

**COLOURS**

Blue



# RM220LSD

## Ladies stretch denim jeans

### FEATURES

- Superior garment assembly, twin needle stitching, rivets and bar tacks for extra strength
- UPF 50+ meets Australian standard AS/NZS 4399:1996
- Quality YKK Zippers

### SIZE

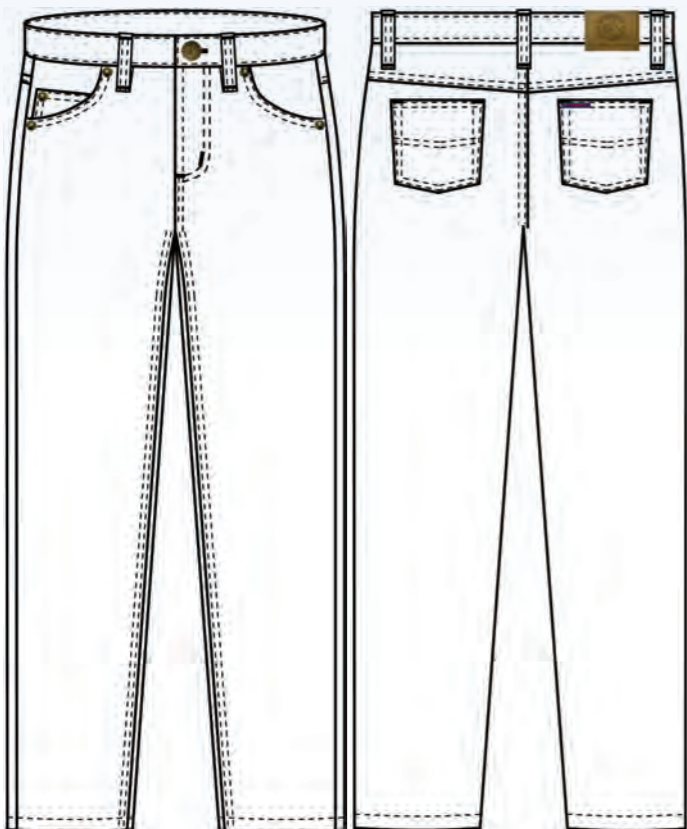
6 - 24 medium rise fit

### WEIGHT

13.75 OZ stone wash denim

### COLOURS

Blue



# RM220LSDR

## Ladies stretch denim jeans with 3M 8910 reflective tape

### FEATURES

- Superior garment assembly, twin needle stitching, rivets and bar tacks for extra strength
- UPF 50+ meets Australian standard AS/NZS 4399:1996
- Quality YKK Zippers

### SIZE

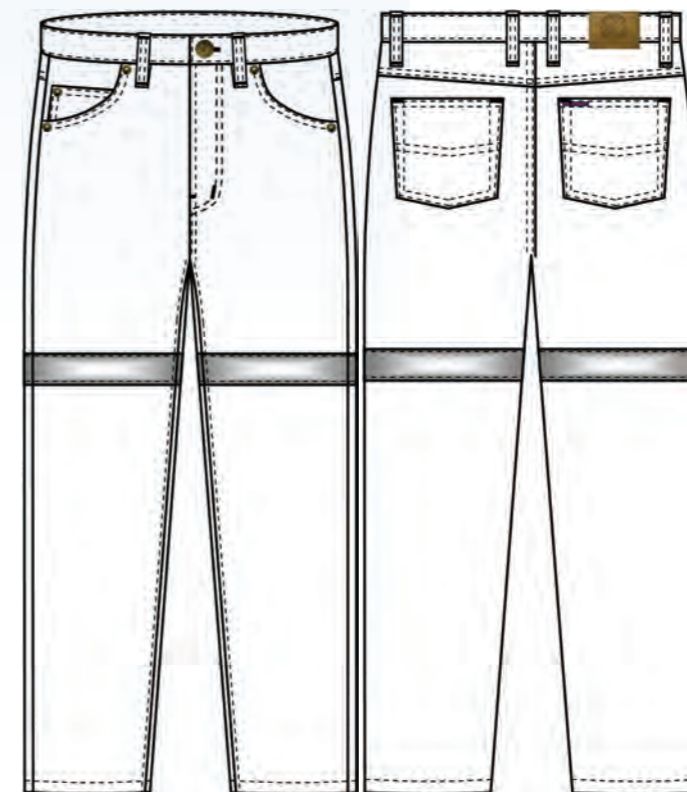
6 - 24 medium rise fit

### WEIGHT

13.75 OZ stone wash denim

### COLOURS

Blue



RM2346

Hi viz long sleeve polo shirt

FEATURES

- Our comfort plus fabric is constructed with a polyester face for superior luminosity and has a cotton back to make the fabric cool and comfortable to wear
- UPF 50+ meets Australian standard AS/NZS 4399:1996
- Meets Australian standard AS/NZS 4602.1:2011 for high visibility day wear

SIZE

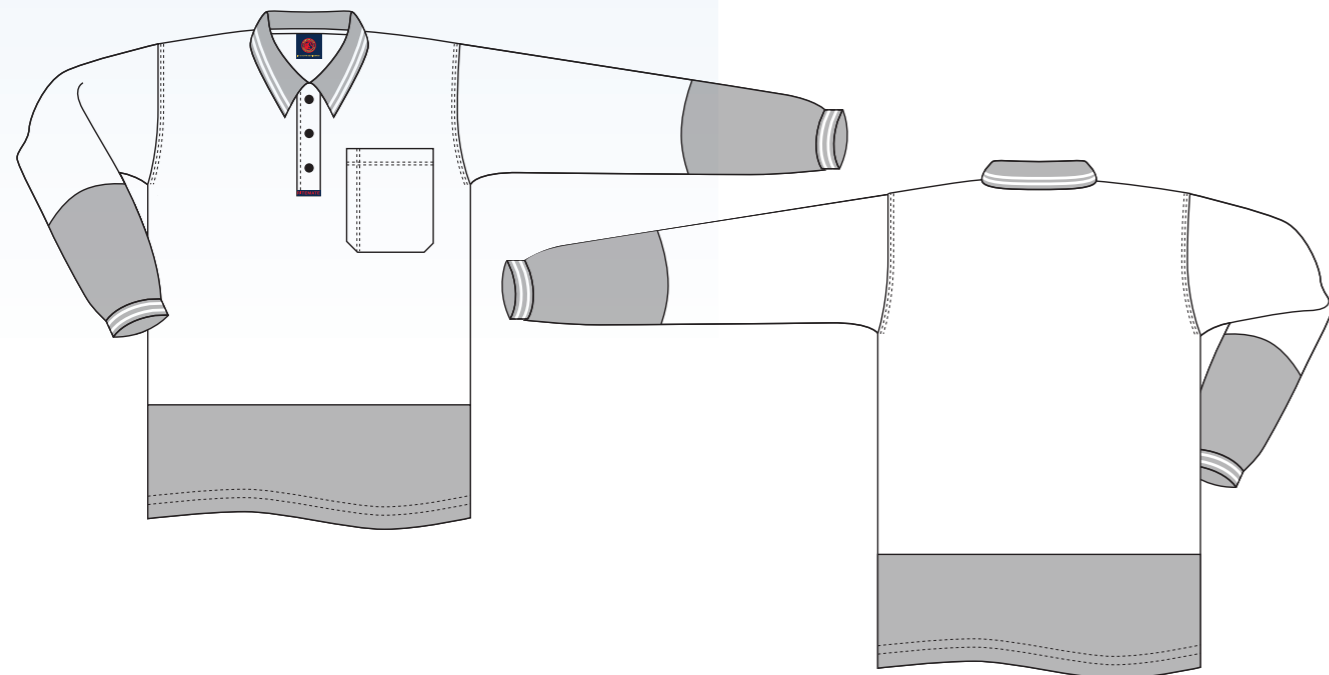
XS - 4XL

WEIGHT

185gsm

COLOURS

Yellow/Bottle, Yellow/Navy, Orange/Navy



RM2346S

Hi viz short sleeve polo shirt

FEATURES

- Our comfort plus fabric is constructed with a polyester face for superior luminosity and has a cotton back to make the fabric cool and comfortable to wear
- UPF 50+ meets Australian standard AS/NZS 4399:1996
- Meets Australian standard AS/NZS 4602.1:2011 for high visibility day wear

SIZE

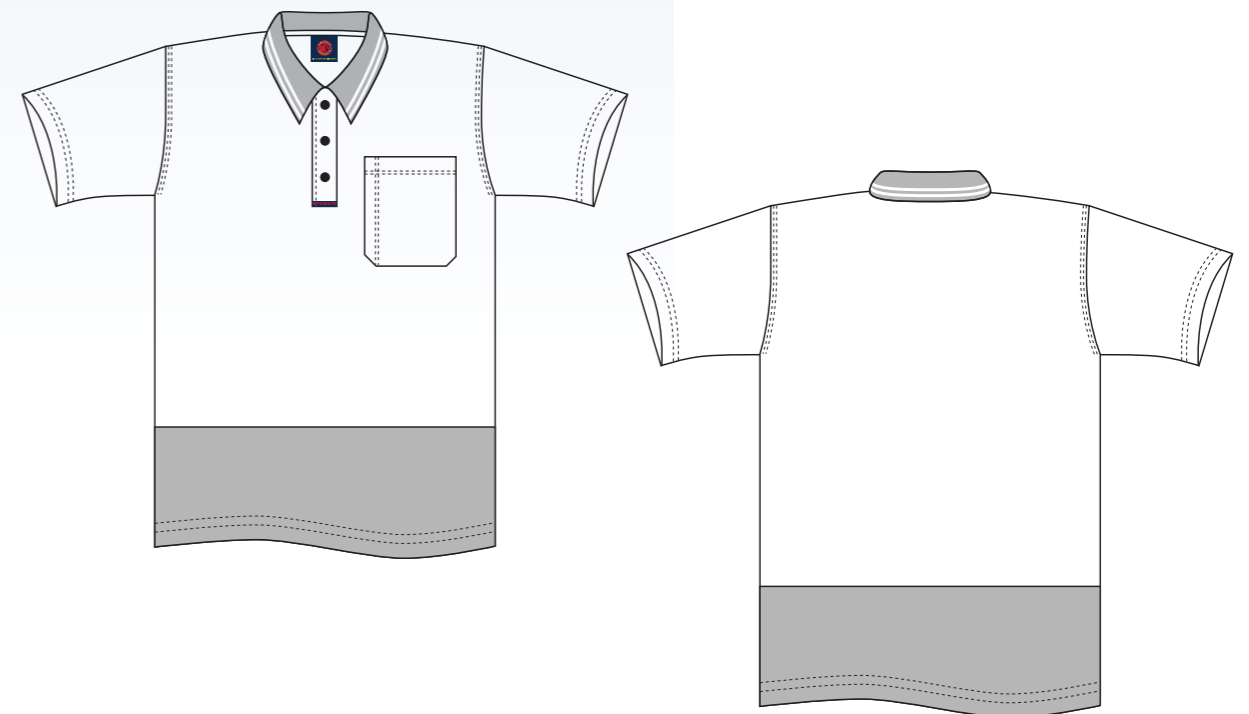
XS - 4XL

WEIGHT

185gsm

COLOURS

Yellow/Bottle, Yellow/Navy, Orange/Navy



# RM4245

## Hi viz vest

### FEATURES

- Extra strength velcro and binding
- Meets Australian standard AS/NZS 4602.1:2011 for high visibility day wear

### SIZE

XS - 4XL

### WEIGHT

120gsm

### QUALITY

100% polyester for superior colour luminosity

### COLOURS

Orange, Yellow



# RM4245T

## Day/night vest with 3M reflective tape

### FEATURES

- Extra strength velcro and binding
- Meets Australian standard AS/NZS 1906.4:2010 & AS/NZS 4602.1:2011 for high visibility day/night wear

### SIZE

XS - 4XL

### WEIGHT

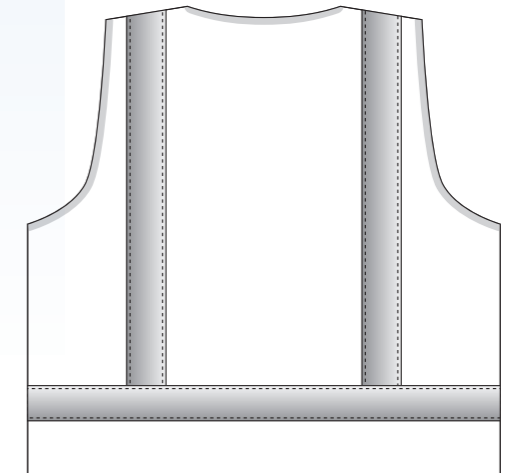
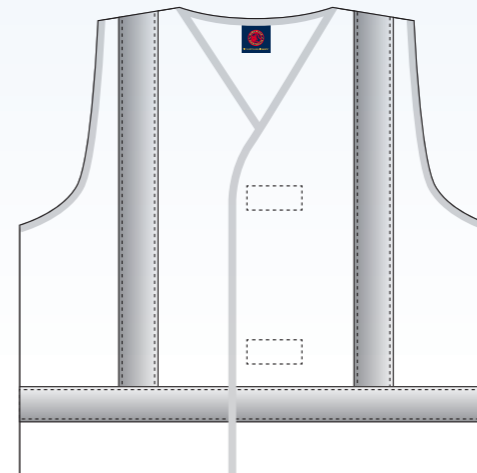
120gsm

### QUALITY

100% polyester for superior colour luminosity

### COLOURS

Orange, Yellow, Pink (for night use only)



# RM6012

## Half zip fleecy pullover

### FEATURES

- Pen pocket on upper sleeve
- Zip pull
- UPF 50+ meets Australian standard AS/NZS 4399:1996
- Meets Australian standard AS/NZS 4602.1:2011 for high visibility day wear

### SIZE

XS - 5XL

### WEIGHT

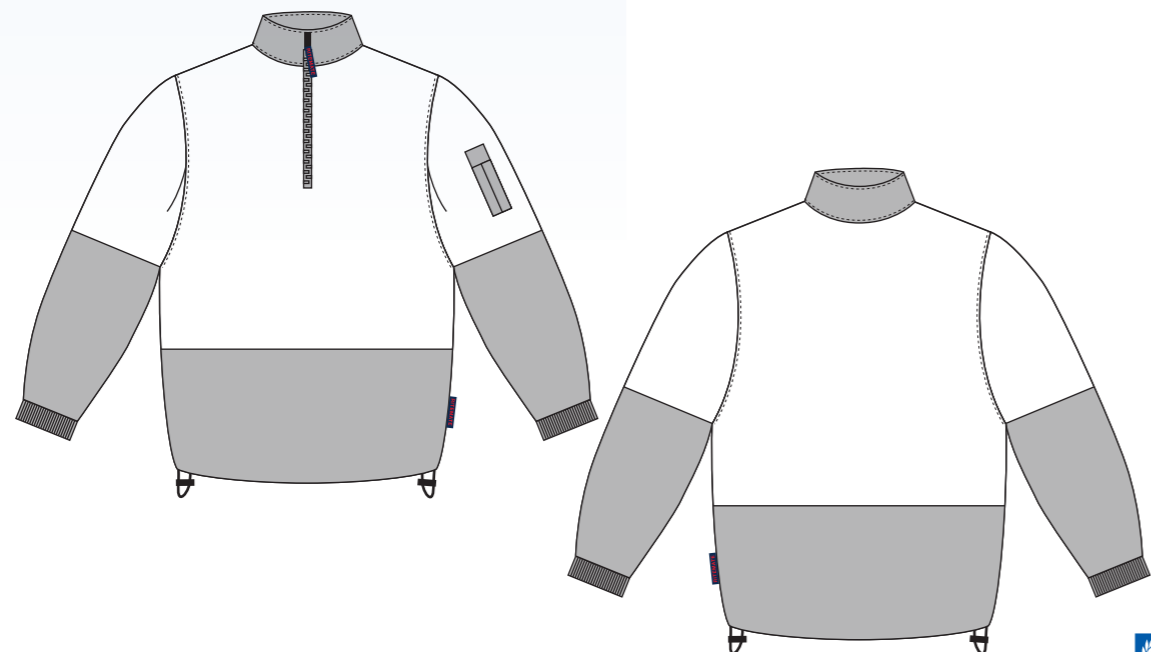
300gsm

### QUALITY

Premium quality 80% polyester / 20% cotton jersey face fleece with hydrophilic moisture management

### COLOURS

Yellow/Navy, Orange/Navy



# RM6012R

## Half zip fleecy pullover with 3M reflective tape

### FEATURES

- Pen pocket on upper sleeve
- Zip pull
- UPF 50+ meets Australian standard AS/NZS 4399:1996
- Meets Australian standard AS/NZS 1906.4:2010 & AS/NZS 4602.1:2011 for high visibility day/night wear

### SIZE

XS - 5XL

### WEIGHT

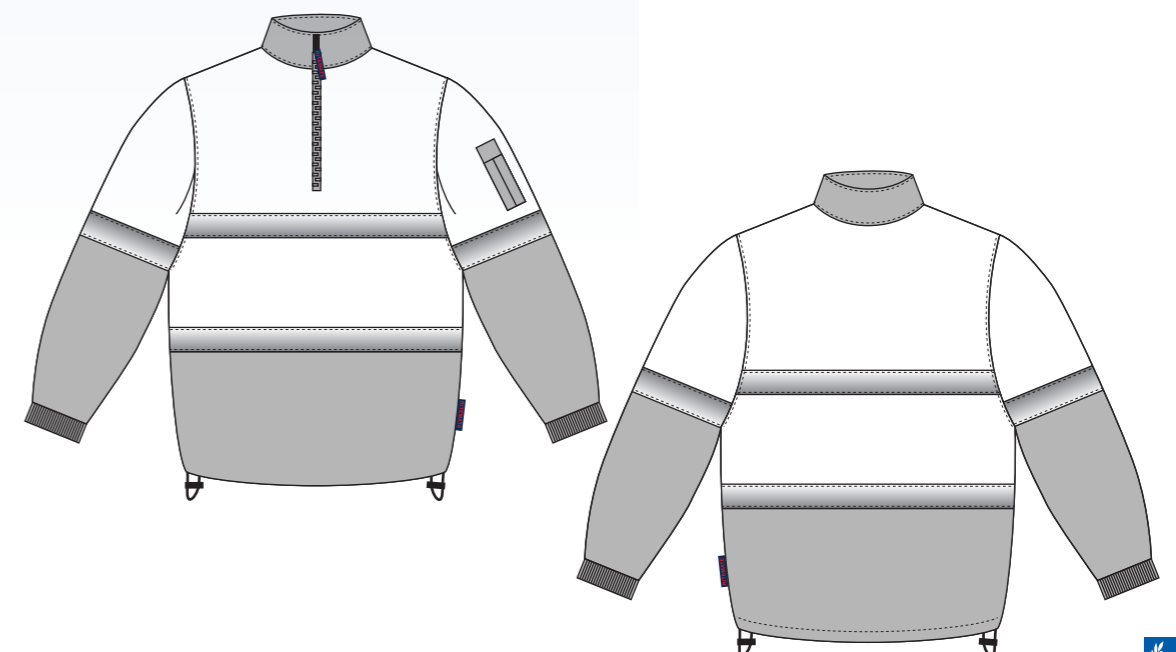
300gsm

### QUALITY

Premium quality 80% polyester / 20% cotton jersey face fleece with hydrophilic moisture management

### COLOURS

Yellow/Navy, Orange/Navy



# RM5071R

2 tone 100% cotton drill jacket with 3M 8910 reflective tape

### FEATURES

- Superior garment assembly, twin needle stitching and bar tacks for extra strength,
- Zip front opening with vislon chunky zipper
- Two front angled side welt pockets, internal zip pocket left side, internal utility pocket right side, internal mobile phone pocket
- Adjustable cuff with touch tape
- Two tone front & back with spliced sleeve
- 50mm 3M 8910 reflective tape hoop configuration front and back
- UPF 50+ meets Australian standard AS/NZS 4399:1996
- Meets Australian standard AS/NZS 1906.4:2010 & AS/NZS 4602.1:2011 for high visibility day/night wear

### SIZE

XS - 5XL

### WEIGHT

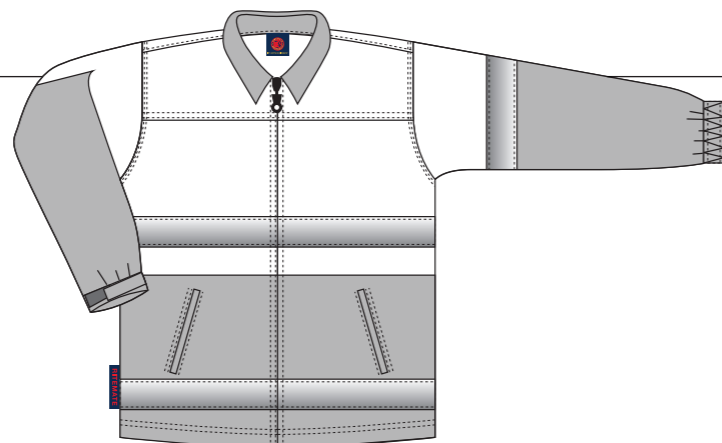
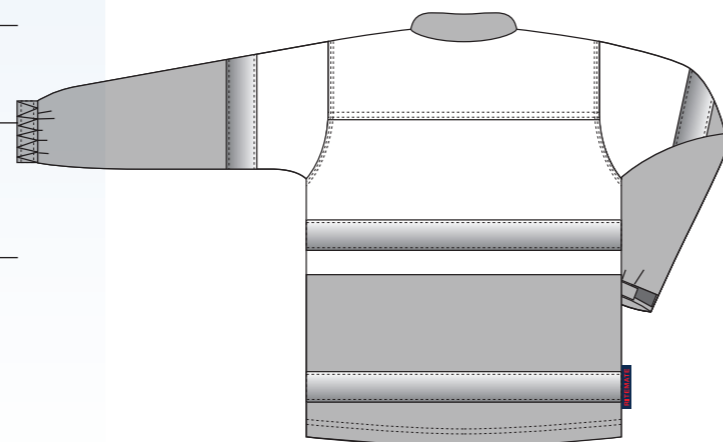
311gsm

### QUALITY

Premium quality mercerized, double pre-shrunk, 100% cotton drill

### COLOURS

Yellow/Navy, Orange/Navy



# RM73N1R

4 in 1 two tone 100% cotton drill jacket with 3M 8910 reflective tape

### FEATURES

- Superior garment assembly, twin needle stitching and bar tacks for extra strength,
- Zip front opening with vislon chunky zipper
- Two front pockets, two side hand warmers, internal pocket on left hand chest with touch tape
- Two tone front & back with spliced sleeve
- 50mm 3M 8910 reflective tape hoop configuration front and back
- UPF 50+ meets Australian standard AS/NZS 4399:1996
- Meets Australian standard AS/NZS 1906.4:2010 & AS/NZS 4602.1:2011 for high visibility day/night wear

### SIZE

XS - 5XL

### WEIGHT

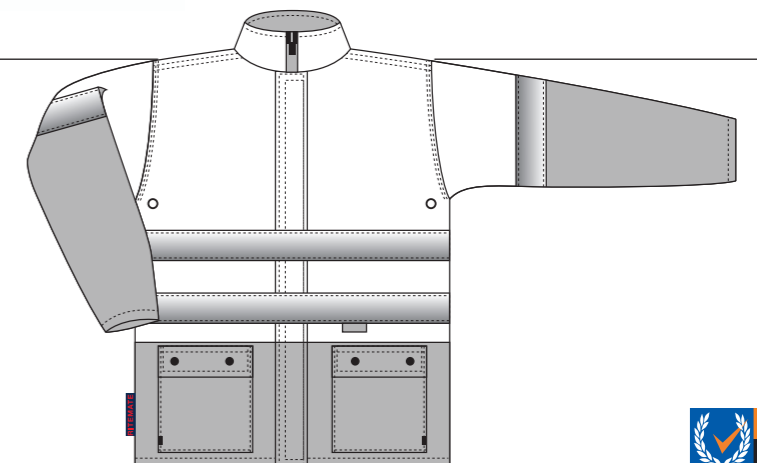
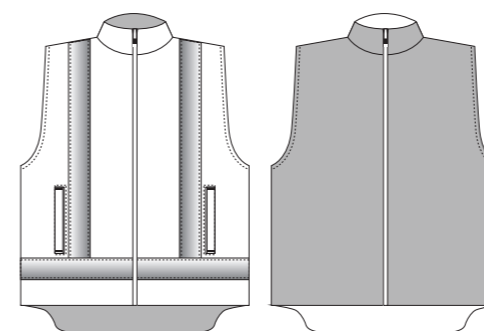
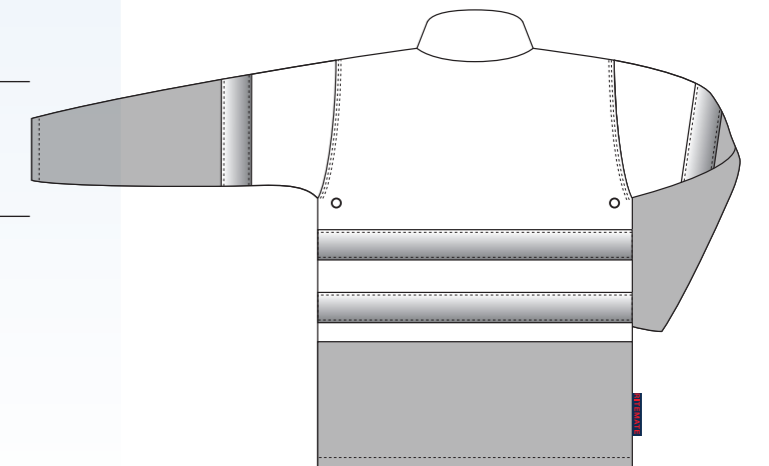
311gsm

### QUALITY

Premium quality mercerized, double pre-shrunk, 100% cotton drill

### COLOURS

Yellow/Navy, Orange/Navy



# SIZE CHARTS

## COVERALLS

	REGULAR SIZES										STOUT SIZES													
METRIC SIZES	72R	77R	82R	87R	92R	97R	102R	107R	112R	117R	122R	127R	132R	137R	142R	87S	92S	97S	102S	107S	112S	117S	122S	127S
CHEST CM	99	102	109	113	120	125	131	136	140	147	154	161	168	175	182	107	114	118	123	128	134	138	143	148
WAIST CM	91	93	100	104	110	115	119	124	130	136	142	148	154	160	166	102	107	113	116	122	127	132	137	142
EXTENDED																								

## MEN'S TROUSERS AND JEANS

	REGULAR SIZES										STOUT SIZES										LONG SIZES							
METRIC SIZES	72R	77R	82R	87R	92R	97R	102R	107R	112R	117R	122R	127R	132R	137R	142R	87S	92S	97S	102S	107S	112S	117S	122S	127S	79L	84L	89L	94L
WAIST CM	72	77	82	87	92	97	102	107	112	117	122	127	132	137	142	87	92	97	102	107	112	117	122	127	79	84	89	94

## LADIES JEANS

	REGULAR SIZES									
METRIC SIZES	6	8	10	12	14	16	18	20	22	24
WAIST CM	68	73	78	83	88	93	98	103	108	113

## SHORTS

	REGULAR SIZES											
LADIES SIZES	8	10	12	14	16	18	20	22	24			
MEN'S SIZES	72R	77R	82R	87R	92R	97R	102R	107R	112R	117R	122R	127R
WAIST CM	72	77	82	87	92	97	102	107	112	117	122	127

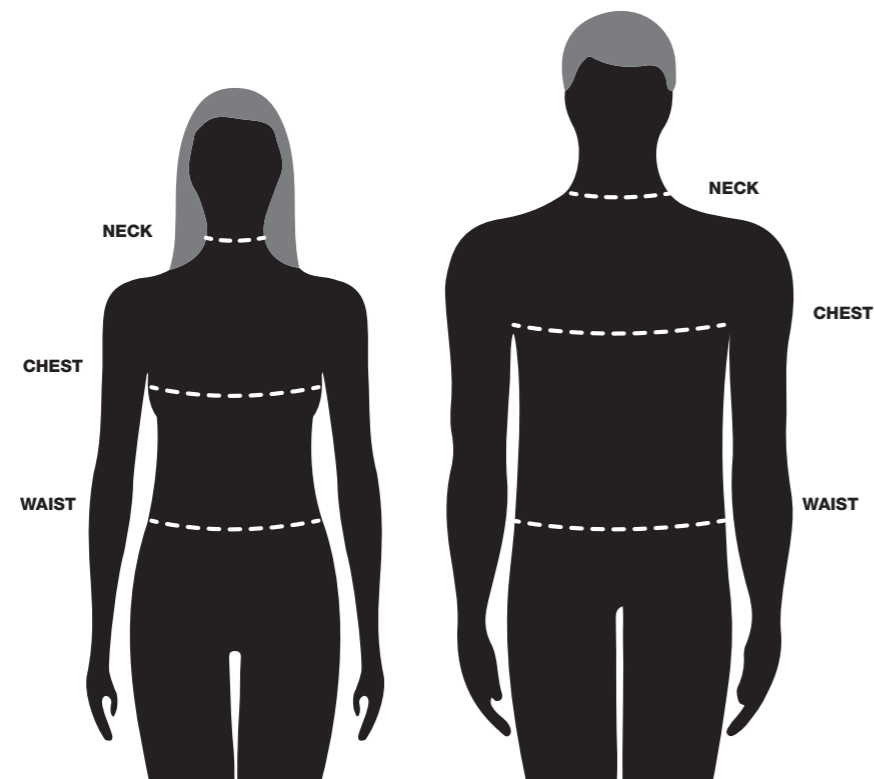
## POLOS, VEST, MENS SHIRTS & JACKETS

## LADIES SHIRTS

	REGULAR SIZES										REGULAR SIZES									
SIZES	2XS	XS	S	M	L	XL	2XL	3XL	4XL	5XL	SIZE CODE	6	8	10	12	14	16	18	20	
RELAXED CHEST	92	96	100	106	114	122	132	140	148	154	RELAXED CHEST	85	90	96	102	107	114	122	130	
NECK CM	32/33	34/35	36/37	38/39	41/42	43/44	45/46	48/49	50/51	52/53	NECK CM	37	38	39	40	41	42	43	44	

## KIDS SHIRTS

	REGULAR SIZES									
SIZES	0	1-2	3-4	5-6	7-8	9-10	11-12	13-14		
RELAXED CHEST	58	63	68	74	80	85	92	98		



For a comfortable fit it is important to measure correctly.  
When measuring make sure the tape is level and not tight.

- NECK** Measure around the neck where the top of the shirt collar would sit – Leaving room for comfort
- CHEST** Standing naturally, measure around the fullest part of the chest and shoulder blades measuring under the arms
- WAIST** Measure over undergarments around your natural waistline

# NOTES



[www.ritemate.com.au](http://www.ritemate.com.au)